

# LC Duplex Adapter-Without Flange-(Symmetrical)

 [fiberhk.com/product\\_fhk/lc-duplex-adapter-without-flange-symmetrical/](https://fiberhk.com/product_fhk/lc-duplex-adapter-without-flange-symmetrical/)

**Sales No.** 0120-XXX

**MFG No.** K2.LC.202YD002.0120

**Manufacturer:** FiberHK

**Product Category:** LC

**Describe:** LC Duplex Adapter-Without Flange-(Symmetrical)

## Applications

### Applications

- Optical fiber communication system
- Optical Security, CATV, FTTx
- Local, Wide and Global Area Networks
- High EMI / RFI environments
- Racks and Panels / Server Rooms
- Test Equipment



## Features

### Features

- Low insertion loss
- Environmentally stable
- Good insertion/extraction life
- Easy installation
- High reliability

## Standards Compliance

### Standards Compliance

- ISO/IEC 11801
- Cenelec EN 50173-1 / 50173-5

---

☑ ANSI/TIA-568 D.3

---

☑ IEC 61574-20

---

☑ IEC 61753-1 / TIA-604-10

---

☑ RoHS, REACH SvHC compliant

**Tech & Mech Performance Value**

Types: LC

---

Port Path: Duplex

---

Flange: Without Flange

---

Shell Structure: Ultrasonic-Welded Assembly

---

Housing Material: Engineering Plastics (PC | PC+ABS)

---

Sleeve Material: ZrO2

---

Clip Type: Metal Clip

---

Clip Gap: 1.8 mm (Min) to 2.0 mm (Max) (Custom Supp)

---

Dust Cap Style: FL01 | 02 | 03 | 05 (See Image For Style)

---

Colour: Blue | Green | Turquoise | Beige (Custom Supp)

---

Mating Durability:  $\geq 500$

---

Ambient Temp (operation):  $-40^{\circ}\text{C} \sim +80^{\circ}\text{C}$

---

Ambient Temp. (storage):  $-40^{\circ}\text{C} \sim +85^{\circ}\text{C}$

---

Insertion Loss (dB): Typical  $\leq 0.2\text{dB}$  | Premium  $\leq 0.10\text{dB}$

---

Impact: 1.5M Drop Height

---

Sleeve Pull Force: 1~3N

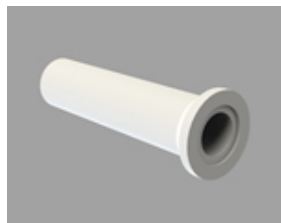
## Ordering Information

---

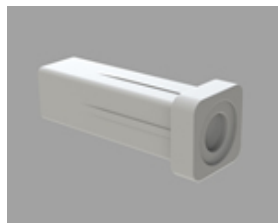
Product Name	MFR NO	Sales No	Shuttering	Material	Colour	Dust Cap style
--------------	--------	----------	------------	----------	--------	----------------

Product Name	MFR NO	Sales No	Shuttering	Material	Colour	Dust Cap style
LC Duplex Adapter-Without Flange-(Symmetrical)	K2.LC.202YD002	0120	Unshuttered	01 PC 11 PC/ABS	01 Blue (RAL5015) 02 Green (RAL6029) 03 Turquoise 04 Beige (RAL 1013) 16 magenta 11 Purple	FL01 Cylindrical Shape FL02 Square Column FL03 Bevel Connection FL05 Bevel Connection
						<b>Color Customization Supported</b> <b>See image for style↓</b>

**FL01-Cylindrical Shape**



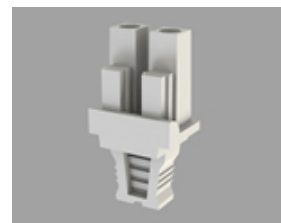
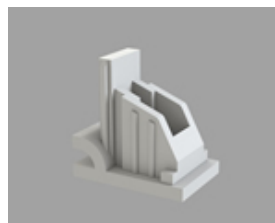
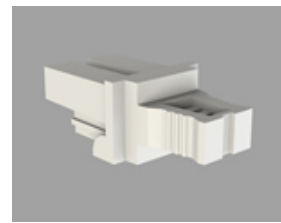
**FL02-Square Column**



**FL03-Bevel Connection**



**FL05-Handle Duplex**

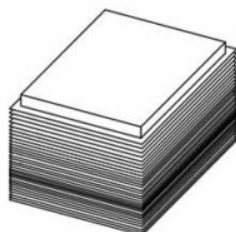
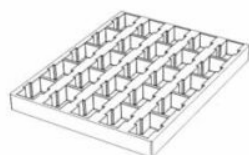


The usual color is white and supports custom colors

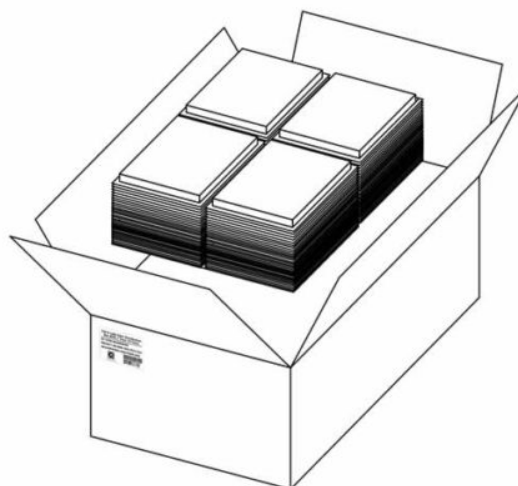
## Product Specifications

Detailed packaging and shipping information

Blister Box



Corrugated Carton



## Dimensions

---

46x36x33 cm  
(LxWxH)

## Net Weight

---

7.26 Kg  
Product Only

## Gross Weight

---

9.82 Kg  
With Packaging

## Packaging

---

Inner Packaging: Blister Box

Outer Packaging: Corrugated Carton

Specification	Unit	Value	Remarks
Unit per Blister box	pcs	25	Transparent Thermoformed Box
Units per Carton	pcs	3000	120 Blister Boxes
Carton Size	cm	46×36×33	Corrugated Carton
Pallet Size	cm	120×80×150	EU Standard
Cartons per Pallet	ctns	36	Max. 6 layers

[Product Specification \(PDF\)](#)

[Product Drawing \(PDF\)](#)

**PRODUCT COMPLIANCE STATEMENT**

**CONFLICT MINERALS POLICY**