


# LC Duplex Fiber Optic Coupler-(Asymmetric)

---

 [fiberhk.com/product\\_fhk/lc-duplex-fiber-optic-coupler-asymmetric/](http://fiberhk.com/product_fhk/lc-duplex-fiber-optic-coupler-asymmetric/)

**Sales No.** 0130-XXX

---

**MFG No.** K2.LC.202G.0130

---

**Manufacturer:** FiberHK

---

**Product Category:** LC

---

**Describe:** LC Duplex Fiber Optic Coupler-(Asymmetric)

## Applications

### Applications

---

- Optical fiber communication system
- Optical Security, CATV, FTTx
- Local, Wide and Global Area Networks
- High EMI / RFI environments
- Racks and Panels / Server Rooms
- Test Equipment

## Features

### Features

---

- Low insertion loss
- Environmentally stable
- Good insertion/extraction life
- Easy installation
- High reliability

## Standards Compliance

### Standards Compliance

---

---

☑ ISO/IEC 11801

---

☑ Cenelec EN 50173-1 / 50173-5

---

☑ ANSI/TIA-568 D.3

---

☑ IEC 61574-20

---

☑ IEC 61753-1 / TIA-604-10

---

☑ RoHS, REACH SvHC compliant

---

**Tech & Mech Performance Value**

Types: LC

---

Port Path: Duplex

---

Flange: Without Flange

---

Shell Structure: Ultrasonic-Welded Assembly

---

Housing Material: Engineering Plastics (PC | PC+ABS | PEI)

---

Sleeve Material: ZrO2

---

Clip Type: Plastic Clip (Integrated)

---

Clip Gap: 1.8 mm (Min) to 2.0 mm (Max) (Custom Supp)

---

Dust Cap Style: FL01 | 02 (See Image For Style)

---

Colour: Blue | Green | Turquoise | Beige (Custom Supp)

---

Mating Durability: ≥ 500

---

Ambient Temp (operation): -40°C ~ +80°C

---

Ambient Temp. (storage): -40°C ~ +85°C

---

Insertion Loss (dB): Typical ≤ 0.2dB | Premium ≤ 0.10dB

---

Impact: 1.5M Drop Height

---

Sleeve Pull Force: 1~3N

---

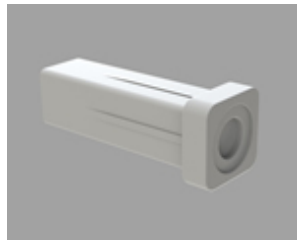
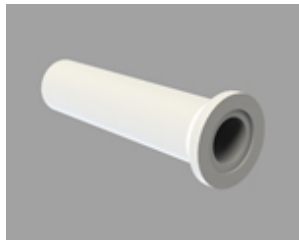
## Ordering Information

---

Product Name	MFR NO	Sales No	Shuttering	Material	Colour	Dust Cap style
--------------	--------	----------	------------	----------	--------	----------------

Product Name	MFR NO	Sales No	Shuttering	Material	Colour	Dust Cap style
LC Duplex Fiber Optic Coupler- (Asymmetric)	K2.LC.202G	0130	Unshuttered	01 PC 05 PEI 11 PC/ABS	01 Blue (RAL5015) 02 Green (RAL6029) 03 Turquoise 04 Beige (RAL 1013) 16 magenta 11 Purple	FL01 Cylindrical Shape FL02 Square Column  <b>See image for style↓</b>
					<b>Color Customization Supported</b>	

**FL01-Cylindrical Shape    FL02-Square Column**




---

The usual color is white and supports custom colors

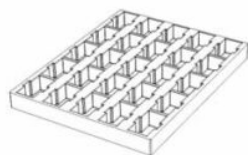
---

## Product Specifications

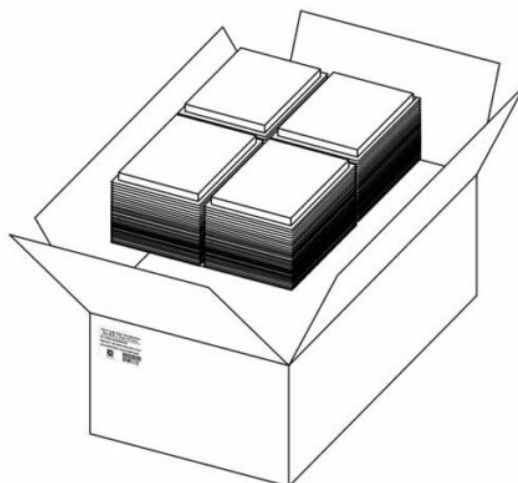
---

Detailed packaging and shipping information

Blister Box



Corrugated Carton



## Dimensions

---

54x38x33 cm  
(LxWxH)

## Net Weight

---

6.08 Kg  
Product Only

## Gross Weight

---

7.61 Kg  
With Packaging

## Packaging

---

Inner Packaging: Blister Box

Outer Packaging: Corrugated Carton

Specification	Unit	Value	Remarks
Unit per Blister box	pcs	20	Transparent Thermoformed Box
Units per Carton	pcs	2000	100 Blister Boxes
Carton Size	cm	54×38×33	Corrugated Carton
Pallet Size	cm	120×80×150	EU Standard
Cartons per Pallet	ctns	24	Max. 6 layers

## [Product Specification \(PDF\)](#)

**Product Drawing (PDF)**

**PRODUCT COMPLIANCE STATEMENT**

**CONFLICT MINERALS POLICY**