

LC Duplex Fiber Optic Coupler-(Symmetrical)

 fiberhk.com/product_fhk/lc-duplex-fiber-optic-coupler-symmetrical/

Sales No. 0140-XXX

MFG No. K2.LC.202S.0140

Manufacturer: FiberHK

Product Category: LC

Describe: LC Duplex Fiber Optic Coupler-(Symmetrical)

Applications

Applications

- Optical fiber communication system
- Optical Security, CATV, FTTx
- Local, Wide and Global Area Networks
- High EMI / RFI environments
- Racks and Panels / Server Rooms
- Test Equipment

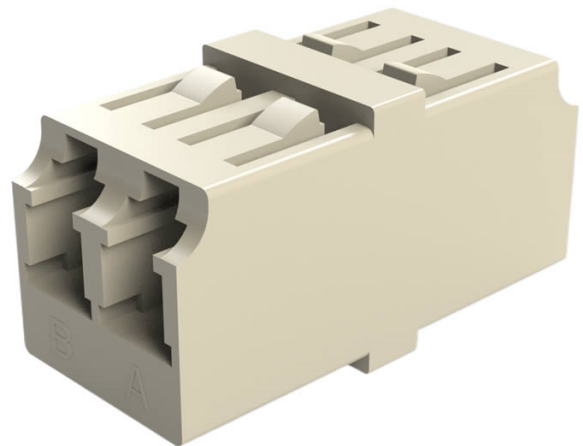
Features

Features

- Low insertion loss
- Environmentally stable
- Good insertion/extraction life
- Easy installation
- High reliability

Standards Compliance

Standards Compliance



☑ ISO/IEC 11801

☑ Cenelec EN 50173-1 / 50173-5

☑ ANSI/TIA-568 D.3

☑ IEC 61574-20

☑ IEC 61753-1 / TIA-604-10

☑ RoHS, REACH SvHC compliant

Tech & Mech Performance Value

Types: LC

Port Path: Duplex

Flange: Without Flange

Shell Structure: Ultrasonic-Welded Assembly

Housing Material: Engineering Plastics (PC | PC+ABS | PEI)

Sleeve Material: ZrO2

Clip Type: Plastic Clip (Integrated)

Clip Gap: 1.8 mm (Min) to 2.0 mm (Max) (Custom Supp)

Dust Cap Style: FL01 | 02 | 03 | 05 (See Image For Style)

Colour: Blue | Green | Turquoise | Beige (Custom Supp)

Mating Durability: ≥ 500

Ambient Temp (operation): -40°C ~ +80°C

Ambient Temp. (storage): -40°C ~ +85°C

Insertion Loss (dB): Typical ≤ 0.2dB | Premium ≤ 0.10dB

Impact: 1.5M Drop Height

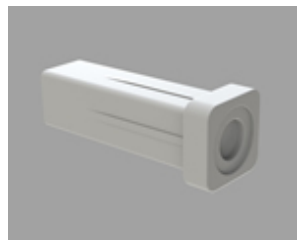
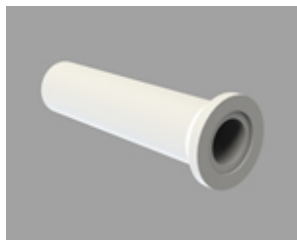
Sleeve Pull Force: 1~3N

Ordering Information

Product Name	MFR NO	Sales No	Shuttering	Material	Colour	Dust Cap style
--------------	--------	----------	------------	----------	--------	----------------

Product Name	MFR NO	Sales No	Shuttering	Material	Colour	Dust Cap style
LC Duplex Fiber Optic Coupler- (Symmetrical)	K2.LC.202S	0140	Unshuttered	01 PC 05 PEI 11 PC/ABS	01 Blue (RAL5015) 02 Green (RAL6029) 03 Turquoise 04 Beige (RAL 1013) 16 magenta 11 Purple	FL01 Cylindrical Shape FL02 Square Column See image for style↓
					Color Customization Supported	

FL01-Cylindrical Shape FL02-Square Column

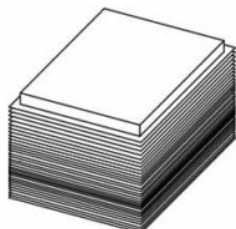
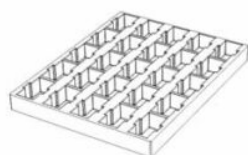


The usual color is white and supports custom colors

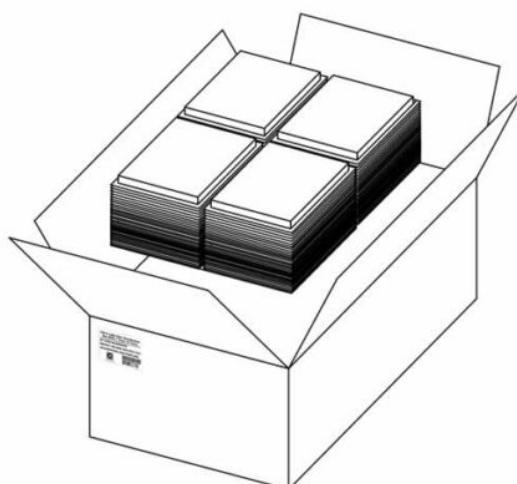
Product Specifications

Detailed packaging and shipping information

Blister Box



Corrugated Carton



Dimensions

54x38x33 cm
(LxWxH)

Net Weight

7.02 Kg
Product Only

Gross Weight

8.55 Kg
With Packaging

Packaging

Inner Packaging: Blister Box

Outer Packaging: Corrugated Carton

Specification	Unit	Value	Remarks
Unit per Blister box	pcs	20	Transparent Thermoformed Box
Units per Carton	pcs	2000	100 Blister Boxes
Carton Size	cm	54×38×33	Corrugated Carton
Pallet Size	cm	120×80×150	EU Standard
Cartons per Pallet	ctns	36	Max. 6 layers

[Product Specification \(PDF\)](#)

Product Drawing (PDF)

PRODUCT COMPLIANCE STATEMENT

CONFLICT MINERALS POLICY