

LC Simplex Adapter-(Asymmetric)-(1-PC)

 fiberhk.com/

Sales No. 00701-XXX

MFG No. K2.LC.101F.00701

Manufacturer: FiberHK

Product Category: LC

Describe: LC Simplex Adapter-(Asymmetric)-(1-PC)

Applications

Applications

- Optical fiber communication system
 - Optical Security, CATV, FTTx
 - Local, Wide and Global Area Networks
 - High EMI / RFI environments
 - Racks and Panels / Server Rooms
 - Test Equipment
-



Features

Features

- Low insertion loss
 - Environmentally stable
 - Good insertion/extraction life
 - Easy installation
 - High reliability
-

Standards Compliance

Standards Compliance

☑ ISO/IEC 11801

☑ Cenelec EN 50173-1 / 50173-5

☑ ANSI/TIA-568 D.3

☑ IEC 61574-20

☑ IEC 61753-1 / TIA-604-10

☑ RoHS, REACH SvHC compliant

Tech & Mech Performance Value

Types: LC

Port Path: Simplex

Flange: Without Flange

Shell Structure: One-Piece Structure

Housing Material: Engineering Plastics (PC | PC+ABS)

Sleeve Material: ZrO2

Clip Type Plastic Clip (Integrated)

Clip Gap: 1.8 mm (Min) to 2.0 mm (Max) (Custom Supp)

Dust Cap Style: FL01 | 02 (See Image For Style)

Colour: Blue | Green | Turquoise | Beige (Custom Supp)

Mating Durability: ≥ 500

Ambient Temp (operation): $-40^{\circ}\text{C} \sim +80^{\circ}\text{C}$

Ambient Temp. (storage): $-40^{\circ}\text{C} \sim +85^{\circ}\text{C}$

Insertion Loss (dB): Typical $\leq 0.2\text{dB}$ | Premium $\leq 0.10\text{dB}$

Impact: 1.5M Drop Height

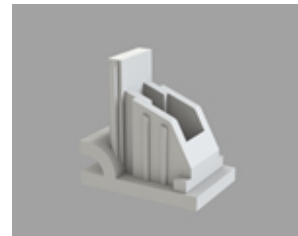
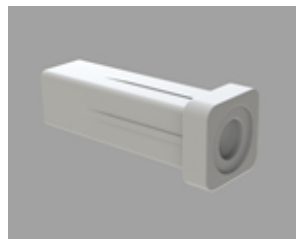
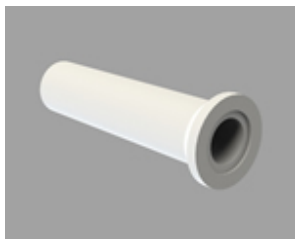
Sleeve Pull Force: 1~3N

Ordering Information

Product Name	MFR NO	Sales No	Shuttering	Material	Colour	Dust Cap style
--------------	--------	----------	------------	----------	--------	----------------

Product Name	MFR NO	Sales No	Shuttering	Material	Colour	Dust Cap style
LC Simplex Adapter- (Asymmetric)- (1-PC)	K2.LC.101F	00701	Unshuttered	01 PC 11 PC/ABS	01 Blue (RAL5015) 02 Green (RAL6029) 03 Turquoise 04 Beige (RAL 1013) 16 magenta 11 Purple Color Customization Supported	FL01 Cylindrical Shape FL02 Square Column See image for style↓

FL01-Cylindrical Shape FL02-Square Column FL03-Bevel Connection

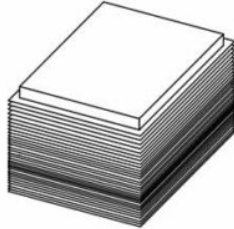
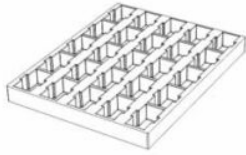


The usual color is white and supports custom colors

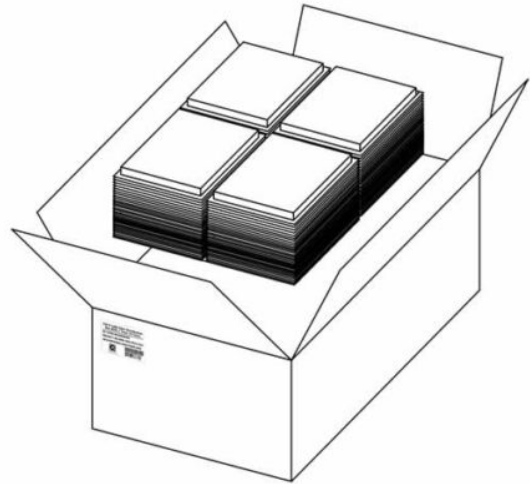
Product Specifications

Detailed packaging and shipping information

Blister Box



Corrugated Carton



Dimensions

54x38x33 cm
(LxWxH)

Net Weight

8.65 Kg
Product Only

Gross Weight

11.10 Kg
With Packaging

Packaging

Inner Packaging: Blister Box

Outer Packaging: Corrugated Carton

Specification	Unit	Value	Remarks
Unit per Blister box	pcs	50	Transparent Thermoformed Box
Units per Carton	pcs	6000	120 Blister Boxes
Carton Size	cm	54×38×33	Corrugated Carton
Pallet Size	cm	120×80×150	EU Standard
Cartons per Pallet	ctns	24	Max. 6 layers

[Product Specification \(PDF\)](#)

Product Drawing (PDF)

PRODUCT COMPLIANCE STATEMENT

CONFLICT MINERALS POLICY