

# SC Duplex Adapter-With Flange

---

 fiberhk.com/

**Sales No.** 0050-XXX

---

**MFG No.** K2.SC2021.0050

---

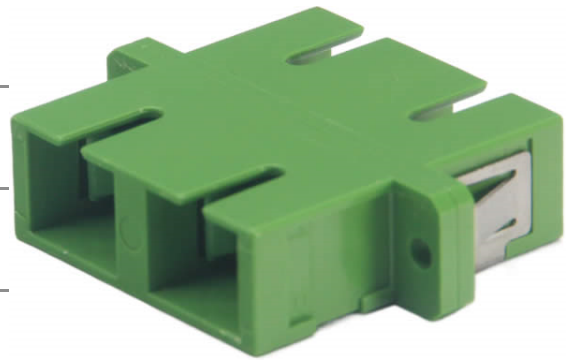
**Manufacturer:** FiberHK

---

**Product Category:** SC

---

**Describe:** SC Duplex Adapter-With Flange



## Applications

Applications

---

- Optical fiber communication system
  - Optical Security, CATV, FTTx
  - Local, Wide and Global Area Networks
  - High EMI / RFI environments
  - Racks and Panels / Server Rooms
  - Test Equipment
- 

## Features

Features

---

- Low insertion loss
  - Environmentally stable
  - Good insertion/extraction life
  - Easy installation
  - High reliability
- 

## Standards Compliance

Standards Compliance

---

---

☑ ISO/IEC 11801

---

☑ ANSI/TIA-568 D.3

---

☑ ISO/IEC 24764/ TIA-942

---

☑ IEC-60874-14

---

☑ IEC 61754-4

---

☑ RoHS, REACH SvHC compliant

**Tech & Mech Performance    Value**

Types: Duplex - 2 Fiber

---

Port Path: SC

---

Flange: With Flange

---

Integrated/Split body: Welding

---

Frame Material: Plastics(ABS / PC+ABS / PBT)

---

Sleeve Material: ZrO2

---

Fragment Size: 1.8~2.0/Panel THK 1.6mm (Custom Supp)

---

Dust Cap Style: FS01~FS06 (See Image For Style)

---

Colour: Blue/Green/Turquoise/Beige (Custom Supp)

---

Magnitude: ≥ 500

---

Ambient temp. (operation): -40°C ~ +80°C

---

Ambient temp. (storage): -40°C ~ +85°C

---

Insertion Loss (dB): Typical ≤ 0.2dB, Premium ≤ 0.10dB

---

Repeatability: ≤ 0.10dB

---

Interchangeability: ≤ 0.20dB

---

Allowable engagement force: <19.6N

---

Tensile strength Of coupling: mechanism: 68.6N

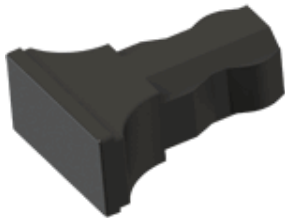
## Ordering Information

---

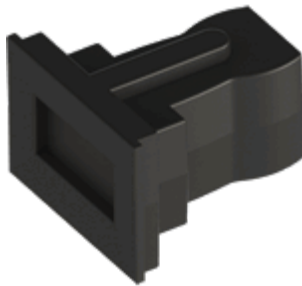
Product Name	MFR NO	Sales No	Shuttering	Material	Colour	Dust Cap style
--------------	--------	----------	------------	----------	--------	----------------

Product Name	MFR NO	Sales No	Shuttering	Material	Colour	Dust Cap style
SC Duplex Adapter - With Flange	K2.SC2021	0050	Unshuttered	01 ABS 02 PBT 11 PC/ABS	01 Blue (RAL5015) 02 Green (RAL6029) 03 Turquoise 04 Beige (RAL 1013) 16 magenta 11 Purple <b>Color Customization Supported</b>	FS01 Gourd Style FS03 T-shaped Style FS04 Locking Style FS06 Regular Style  <b>See image for style↓</b>

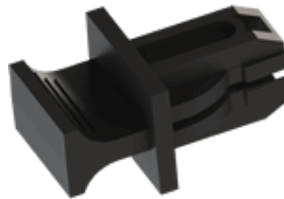
**FS01-Gourd Style**



**FS03-T-Shaped Style**



**FS04-Locking Style**



**FS06-Regular Style**

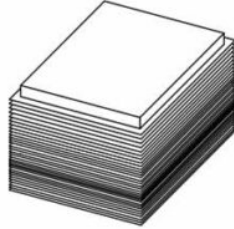
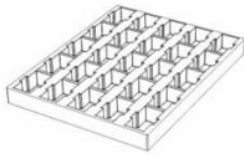


! Dust Cap is standard black and can be customized or matched to the product color.

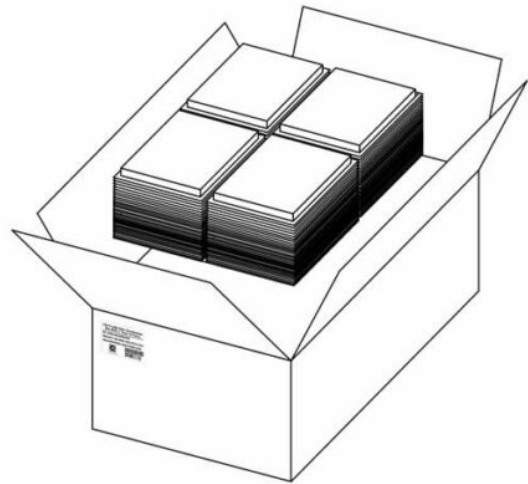
## Product Specifications

Detailed packaging and shipping information

Blister Box



Corrugated Carton



## Dimensions

---

46x36x33 cm  
(LxWxH)

## Net Weight

---

16.08 Kg  
Product Only

## Gross Weight

---

18.43 Kg  
With Packaging

## Packaging

---

Inner Packaging: Blister Box

Outer Packaging: Corrugated Carton

Specification	Unit	Value	Remarks
Unit per Blister box	pcs	20	Transparent Thermoformed Box
Units per Carton	pcs	2000	120 Blister Boxes
Carton Size	cm	46×36×33	Corrugated Carton
Pallet Size	cm	120×80×150	EU Standard
Cartons per Pallet	ctns	36	Max. 6 layers

## [Product Specification \(PDF\)](#)

**Product Drawing (PDF)**

PRODUCT COMPLIANCE STATEMENT

CONFLICT MINERALS POLICY