

SC Simplex Adapter-Without Flange-(Metal Frame Shutter)

 fiberhk.com



Sales No. 00301-XXX

MFG No. K2.SC1JF20.00301

Manufacturer: FiberHK

Product Category: SC

Describe: SC Simplex Adapter-Without Flange-(Metal Frame Shutter)

Applications

Applications

- Optical fiber communication system
 - Optical Security, CATV, FTTx
 - Local, Wide and Global Area Networks
 - High EMI / RFI environments
 - Racks and Panels / Server Rooms
 - Test Equipment
-

Features

Standards Compliance

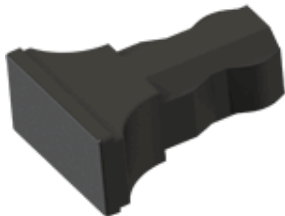
| Tech & Mech Performance | Value |
|------------------------------------|--|
| Types: | Simplex - 1 Fiber (metal shutters) |
| Port Path: | SC |
| Flange: | Without Flange |
| Integrated/Split body: | Welding |
| Frame Material: | Plastics(ABS / PC+ABS / PBT) |
| Sleeve Material: | ZrO2 |
| Fragment Size: | 1.8~2.0/Panel THK 1.6mm (Custom Supp) |
| Dust Cap Style: | FS01~FS06 (See Image For Style) |
| Colour: | Blue/Green/Turquoise/Beige (Custom Supp) |
| Magnitude: | ≥ 500 |
| Ambient temp. (operation): | -40°C ~ +80°C |
| Ambient temp. (storage): | -40°C ~ +85°C |
| Insertion Loss (dB): | Typical ≤ 0.2dB, Premium ≤ 0.10dB |
| Repeatability: | ≤ 0.10dB |
| Interchangeability: | ≤ 0.20dB |
| Allowable engagement force: | <19.6N |
| Tensile strength Of coupling: | mechanism: 68.6N |

Ordering Information

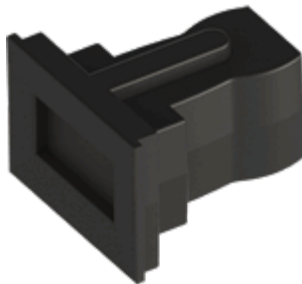
| Product Name | MFR NO | Sales No | Shuttering | Material | Colour | Dust Cap style |
|---------------------|---------------|-----------------|-------------------|-----------------|---------------|-----------------------|
|---------------------|---------------|-----------------|-------------------|-----------------|---------------|-----------------------|

| Product Name | MFR NO | Sales No | Shuttering | Material | Colour | Dust Cap style |
|---|------------|----------|----------------|-------------------------------|---|--|
| SC Simplex Adapter-Without Flange-(Metal Frame Shutter) | K2.SC1JF20 | 00301 | Metal Shutters | 01 ABS 02 PBT 11 PC/ABS | 01 Blue (RAL5015) 02 Green (RAL6029) 03 Turquoise 04 Beige (RAL 1013) 16 magenta 11 Purple Color Customization Supported | FS01 Gourd Style FS03 T-shaped Style FS04 Locking Style FS06 Regular Style See image for style↓ |

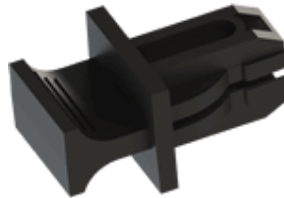
FS01-Gourd Style



FS03-T-Shaped Style



FS04-Locking Style



FS06-Regular Style



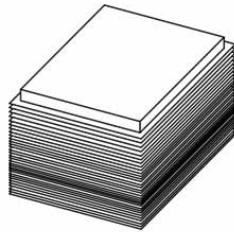
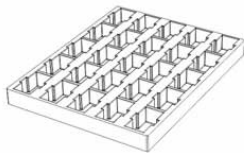
! Dust Cap is standard black and can be customized or matched to the product color.

编辑

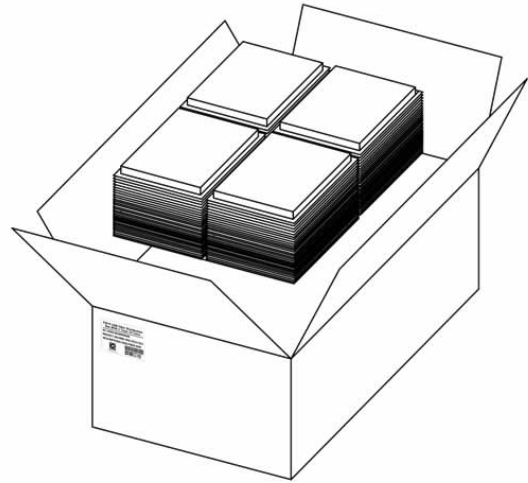
Product Specifications

Detailed packaging and shipping information

Blister Box



Corrugated Carton



Dimensions

46x36x33 cm
(LxWxH)



Net Weight

15.72 Kg
Product Only



Gross Weight

18.30 Kg
With Packaging



Packaging

Inner Packaging: Blister Box
Outer Packaging: Corrugated Carton

| Specification | Unit | Value | Remarks |
|----------------------|-------------|--------------|------------------------------|
| Unit per Blister box | pcs | 25 | Transparent Thermoformed Box |
| Units per Carton | pcs | 3000 | 120 Blister Boxes |
| Carton Size | cm | 46×36×33 | Corrugated Carton |
| Pallet Size | cm | 120×80×150 | EU Standard |
| Cartons per Pallet | ctns | 36 | Max. 6 layers |

[Product Specification \(PDF\)](#)

[Product Drawing \(PDF\)](#)