

LC Duplex Adapter-Without Flange-(Outward Shutter)

 fiberhk.com/product_fhk/lc-duplex-adapter-without-flange-outward-shutter/

Sales No. 0105-XXX

MFG No. K2.LC.2ZF2W002.0105

Manufacturer: FiberHK

Product Category: LC

Main Features: Outward Shutter

Applications

Applications

- Optical fiber communication system
- Optical Security, CATV, FTTx
- Local, Wide and Global Area Networks
- High EMI / RFI environments
- Racks and Panels / Server Rooms
- Test Equipment



Features

Features

- Low insertion loss
- Environmentally stable
- Good insertion/extraction life
- Easy installation
- High reliability

Standards Compliance

Standards Compliance

- ISO/IEC 11801

- Cenelec EN 50173-1 / 50173-5
- ANSI/TIA-568 D.3
- IEC 61574-20
- IEC 61753-1 / TIA-604-10
- RoHS, REACH SvHC compliant

Tech & Mech Performance Value

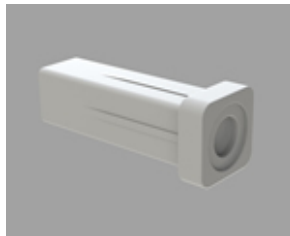
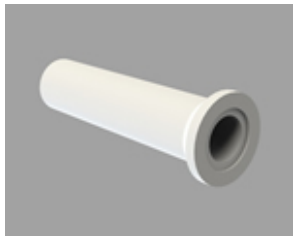
Types:	LC
Port Path:	Duplex
Flange:	Without Flange
Shell Structure:	Ultrasonic-Welded Assembly
Housing Material:	Engineering Plastics (PC PC+ABS)
Sleeve Material:	ZrO2
Clip Type	Metal Clip
Clip Gap:	1.8 mm (Min) to 2.0 mm (Max) (Custom Supp)
Dust Cap Style:	FL01 02 (See Image For Style)
Colour:	Blue Green Turquoise Beige (Custom Supp)
Mating Durability:	≥ 500
Ambient Temp (operation):	-40°C ~ +80°C
Ambient Temp. (storage):	-40°C ~ +85°C
Insertion Loss (dB):	Typical ≤ 0.2dB Premium ≤ 0.10dB
Impact:	1.5M Drop Height
Sleeve Pull Force:	1~3N

Ordering Information

Product Name	MFR NO	Sales No	Shuttering	Material	Colour	Dust Cap style
--------------	--------	----------	------------	----------	--------	----------------

Product Name	MFR NO	Sales No	Shuttering	Material	Colour	Dust Cap style
LC Duplex Adapter-Without Flange-(Outward Shutter)	K2.LC.2ZF2W002	0105	Unshuttered	01 PC 11 PC/ABS	01 Blue (RAL5015) 02 Green (RAL6029) 03 Turquoise 04 Beige (RAL 1013) 16 magenta 11 Purple	FL01 Cylindrical Shape FL02 Square Column See image for style↓
					Color Customization Supported	

FL01-Cylindrical Shape FL02-Square Column

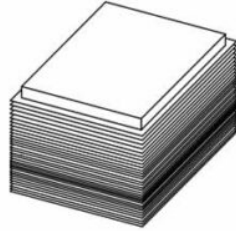
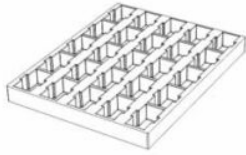


The usual color is white and supports custom colors

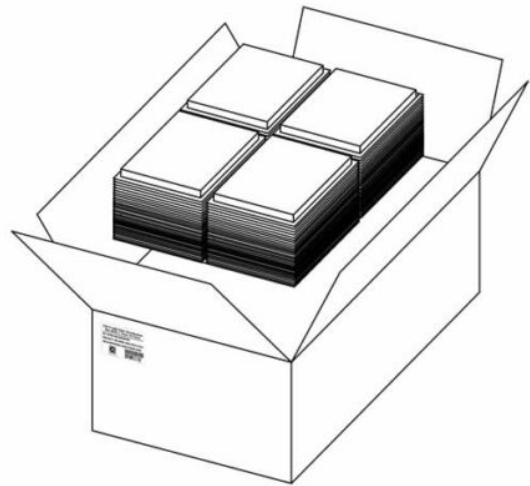
Product Specifications

Detailed packaging and shipping information

Blister Box



Corrugated Carton



Dimensions

46x36x33 cm
(LxWxH)

Net Weight

7.92 Kg
Product Only

Gross Weight

10.48 Kg
With Packaging

Packaging

Inner Packaging: Blister Box

Outer Packaging: Corrugated Carton

Specification	Unit	Value	Remarks
Unit per Blister box	pcs	25	Transparent Thermoformed Box
Units per Carton	pcs	3000	120 Blister Boxes
Carton Size	cm	46×36×33	Corrugated Carton
Pallet Size	cm	120×80×150	EU Standard
Cartons per Pallet	ctns	36	Max. 6 layers

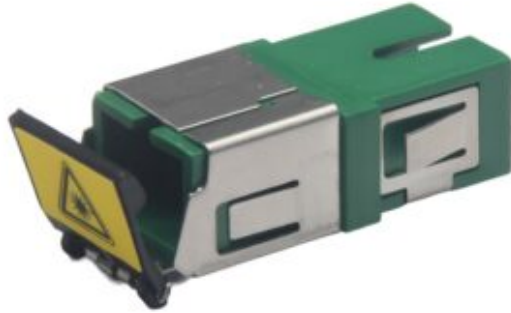
[Product Specification \(PDF\)](#)

Product Drawing (PDF)

PRODUCT COMPLIANCE STATEMENT

CONFLICT MINERALS POLICY

Associated Products



SC Series



SC Series



SC Series