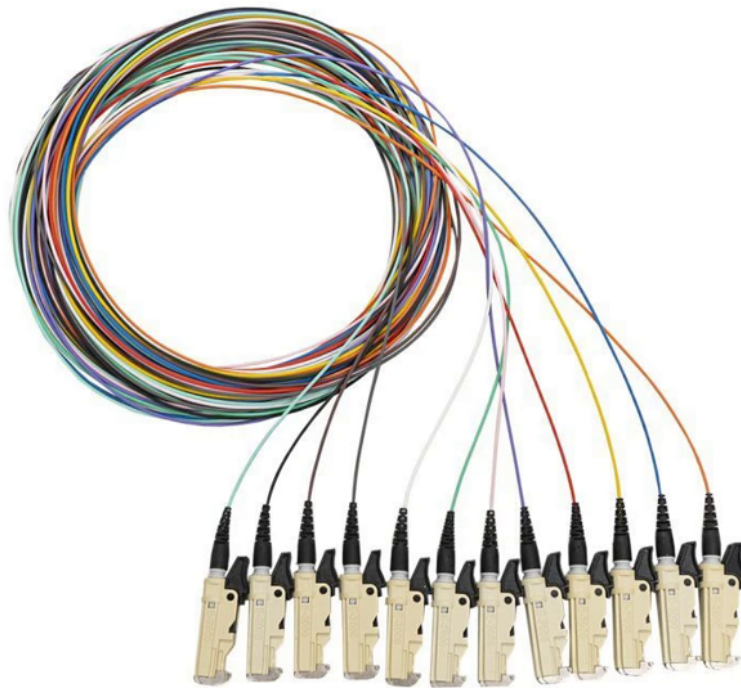


Pigtails SX E2000/PC-BF

 fiberhk.com/product_fhk/pigtails-sx-e2000-pc-bf/



Pigtails SX E2000/PC-BF

Sales No. PT-SX-E2000P-BF

Manufacturer: FiberHK

Product Category: Pigtails | Simplex/span>

Precision Engineered Fiber Optic Solutions

FHK operates a state-of-the-art cable assembly facility specializing in the manufacture of high-performance patch cords and pigtails. Utilizing premium-grade connectors and optical cables, each assembly undergoes

Rigorous Testing

IEC-compliant optical performance validation

Traceable Quality

Unique ID with certified test reports

Standardized Production

ISO-certified manufacturing processes

Features

- Latching Mechanism: Push-pull self-locking with dust cap
- Dust Protection: Integrated spring-loaded shutter (auto-closing)
- Polish Type: APC (8° angle) standard, UPC optional
- Ferrule Material: Zirconia ceramic (Ø1.25mm)
- ESD Protection: <0.1kV electrostatic discharge protection
- Keying System: Color-coded housing (Green = APC, Blue = UPC)
- Compact Design: 30% smaller than SC connectors (16.5×15.8mm)
- Medical Certification: IEC 60601-1 compliant for laser medical devices

Applications

- Telecom: FTTH OLT ports, 5G AAU fronthaul, WDM/PON systems
- Medical: Endoscopy lasers, MRI systems, surgical robotics
- Industrial: Petrochemical sensors, railway signaling, nuclear plant controls
- Marine: Subsea communications, shipboard networks, offshore platforms
- Broadcast: OB vans, satellite uplinks, 4K/8K video production
- Defense: Battlefield comms, drone control links, secure facilities

General Mechanical Specifications for Fiber Optic Patch Cords

Parameter	Patch Cord	Pigtail
Insertion Loss	≤0.3 dB	≤0.3 dB
Return Loss (APC)	≥60 dB	≥60 dB
Mating Cycles	>1,000	>500
Tensile Strength	>100 N	>80 N
Operating Temperature	-40°C ~ +85°C	-40°C ~ +85°C
Crush Resistance	>200 N/cm	N/A
Shock Resistance	ΔIL≤0.2dB (50g/11ms)	ΔIL≤0.2dB (50g/11ms)

(Not applicable to E2000. E2000 is simplex/duplex only. MPO compatibility requires hybrid adapters)

Additional Specifications for Pigtails

Parameter	Specification	Test Method
Bare Fiber Length	1.0±0.1 m (Custom: up to 5m)	IEC 60793-1-20
Coating Diameter	245±10 μm	IEC 60793-1-20
Splice Strength	>1.0 GPa	IEC 61300-3-22
Fanout Length	0.6m/1.2m/1.8m (Standard)	Custom
Cable Type	900μm tight buffer, 2.0mm breakout	IEC 60794-2-50
Thermal Cycling	ΔIL≤0.1dB (-40°C ~ +85°C, 10 cycles)	IEC 61300-2-22

Key Differences by Connector Type

Type	Ferrule Diameter	Mating Cycles	IP Rating	Typical Applications	Locking Mechanism
E2000	Ø1.25 mm	>500	IP68	Data Centers and Cloud Computing Infrastructure	Push-pull latch

Type	Ferrule Diameter	Mating Cycles	IP Rating	Typical Applications	Locking Mechanism
LC	Ø1.25 mm	>500	IP40	High-density (SFP modules)	Latch
SC	Ø2.5 mm	>1,000	IP50	Data centers/Telecom	Push-pull
FC	Ø2.5 mm	>1,000	IP67	High-vibration environments	Threaded
MPO	6.4×2.4 mm	>500	-	40G/100G SR4 modules	Push-pull with guide pins
MU	Ø1.25 mm	>500	-	Japan market	Push-pull
ST	Ø2.5 mm	>500	IP54	Legacy networks	Bayonet

Critical Notes Table

Ref	Category	Requirement
1	Cleaning	Use dry E2000 cleaning tools only (No IPA alcohol)
2	APC Applications APC	Mandatory for CATV/WDM systems with >10mW laser power
3	Adapter Compatibility	Hybrid adapters required for E2000-LC/SC connections
4	Medical Use	Gold-plated version required for IEC 60601-1 compliance
5	Salt Environments	Specify stainless steel latch mechanism for marine applications

Availability

Option	Choices
Patch Cord	
Fiber Type	OS2 (G.652D), OM3, OM4, OM5
Configuration	Simplex, Duplex
Cable Diameter	0.9mm (high-flex), 2.0mm (standard), 3.0mm (armored)
Lengths	0.5/1/2/3/5/10/15/20/30m (Std), Custom ≤100m
Connector Combos	E2000-E2000, E2000-LC, E2000-SC
Jacket Material	PVC (Indoor), LSZH (Riser), OFNP (Plenum)
Pigtails	

Option	Choices
Fiber Type	OS2, OM4 OS2 , OM4
Termination	Bare fiber (250/900µm), 0.9mm tight buffer
Lengths	1.0/1.5/2.0m (Std), Custom ≤5m
Fiber Count	1-12 fibers (with breakout tubing)
Connector Polish	APC (Std), UPC (Opt)
Kits	6/12/24-port rack mount kits available
Certification	Individual test report per IEC 61300-3-35

Purchase Information

Product Type	Fiber Type	Fiber Spec	Structure	Conn A	Polish A	Conn B	Polish B	Diam (mm)	Length
Patch cord	SM	9/125	Simplex	E2000	APC	E2000	APC	0.9	0.5M
									1M
	MM	50/125	Duplex	FC	UPC	FC	UPC	2.0	1.5M
									2M
		62.5/125		LC	PC	LC	PC	3.0	3M
									5M
				MPO		MPO			10M
				MU		MU			20M
									25M
									30
							Custom lengths available		

Product Type	Fiber Type	Fiber Spec	Structure	Conn A	Polish A	Tail End	Diam (mm)	Length	
Pigtail	SM	9/125	Simplex	E2000	APC	BF	0.9	0.5M	
								1M	
	MM	50/125	Duplex	FC	UPC			2.0	1.5M
									2M
		62.5/125		LC	PC			3.0	3M
									5M
				MPO					10M
				MU					20M
									25M
									30
							Custom lengths available		

[Product Specification \(PDF\)](#)

[PRODUCT COMPLIANCE STATEMENT](#)

[CONFLICT MINERALS POLICY](#)



[FAQ](#)



[Send us your message](#)