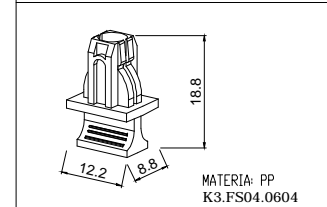
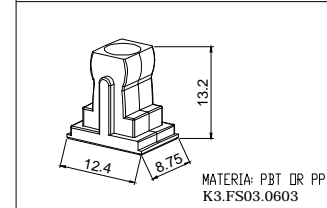
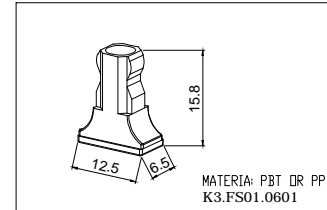
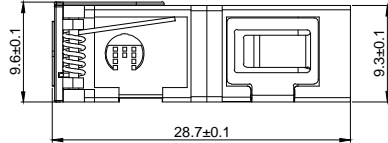
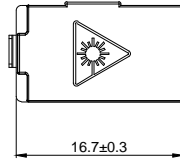
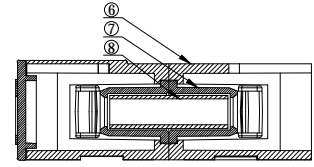
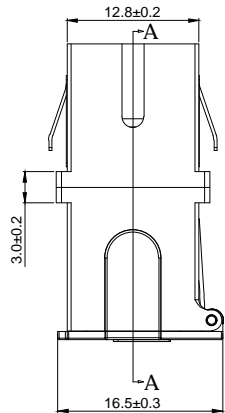
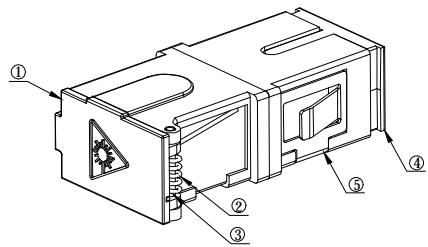


No.	PART NAME	QTY	MATERIAL
1	SHUTTER	1	PC/ABS
2	TORSION SPRING	1	SUS304
3	SPRING PIN	1	SUS304
4	CAPS	1	PP
5	CLIP	1	SUS304
6	HOUSING	2	PC/ABS
7	SLEEVE HOLDER	2	PBT
8	SLEEVE	1	ZIRCONIA



OPTIONAL ATTACHMENT



SECTION A-A

- TECHNICAL REQUIREMENT:  
 1.COMPLIES WITH IEC 61754-4 AND TIA-604-3  
 2.COMPLIES WITH IEC-60874-14-3 AND IEC-60874-14-4  
 3.COMPLIES WITH IEC 61753-1 CATEGORY (C)  
 4.COMPLIES WITH ROHS, REACH REQUIREMENTS



SC SIMPLEX ADAPTER-WITHOUT FLANGE  
(SIDE SHUTTER)

PRODUCT DRAWING

DOCUMENT NUMBER	DOC TYPE	DOC PART	DREVISION
K2.SC1CF20.0032	PDF	M001	A/2

DIMENSION UNITS MM	SCALE 1:1	CURRENT REV DESC:	
GENERAL TOLERANCES (UNLESS SPECIFIED)		DRWN: JHK 2024/05/25	
ANGULAR TOL ± °		CHK'D: CHENEY 2024/05/26	
X	± 0.2	APPR: JACK 2024/11/26	
X.X	± 0.1	INITIAL REVISION:	
X.XX	± 0.05	DRWN: CHENEY 2012/03/11	
X.XXX	± 0.003	APPR: JACK 2012/03/26	
X°	± 2°	THIRD ANGLE PROJECTION	
X.X°	± 1°	DRAWING A-SIZE	
DRAFT WHERE APPLICABLE MUST REMAIN WITHIN DIMENSIONS		CUSTOMER	SHEET NUMBER
		0032	1 OF 1

NOTES  
 1.ALL DIMENSIONS WITHOUT TOLERANCE ARE FOR REFERENCE ONLY.  
 2.DUST CAPS ARE SHOWN IN ISOMETRIC VIEWS ONLY.