
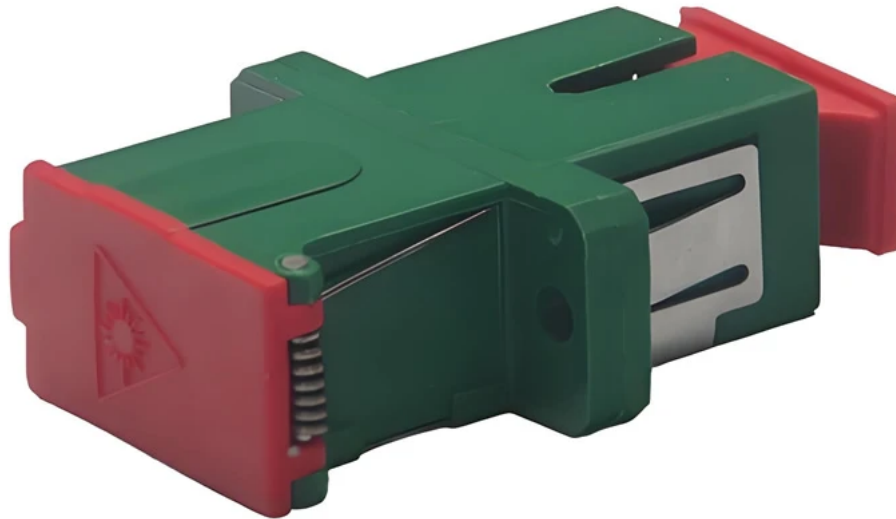


SC Simplex Adapter-With Flange-(Side Shutter)

 fiberhk.com/product_fhk/sc-simplex-adapter-with-flange-side-shutter/



Sales No. 0034-XXX

MFG No. K2.SC1CF21.0034

Manufacturer: FiberHK

Product Category: SC

Describe: SC Simplex Adapter-With Flange-(Side Shutter)

[Applications](#)

Applications

- Optical fiber communication system
- Optical Security, CATV, FTTx
- Local, Wide and Global Area Networks
- High EMI / RFI environments
- Racks and Panels / Server Rooms

-
- Test Equipment

[Features](#)

Features

-
- Low insertion loss
-
- Environmentally stable
-
- Good insertion/extraction life
-
- Easy installation
-
- High reliability

[Standards Compliance](#)

Standards Compliance

-
- ☑ ISO/IEC 11801
-
- ☑ ANSI/TIA-568 D.3
-
- ☑ ISO/IEC 24764/ TIA-942
-
- ☑ IEC-60874-14
-
- ☑ IEC 61754-4
-
- ☑ RoHS, REACH SvHC compliant

Tech & Mech Performance	Value
------------------------------------	--------------

Types:	SC
--------	----

Port Path:	Simplex - 1 Fiber
------------	-------------------

Flange:	With Flange
---------	-------------

Shell Structure:	Ultrasonic-Welded Assembly
------------------	----------------------------

Housing Material:	Engineering Plastics (ABS PC+ABS PBT)
-------------------	--

Sleeve Material:	ZrO2
------------------	------

Clip Gap:	1.8 mm (Min) to 2.0 mm (Max) (Custom Supp)
-----------	--

Dust Cap Style:	FS01~FS06 (See Image For Style)
-----------------	---------------------------------

Colour:	Blue Green Turquoise Beige (Custom Supp)
---------	--

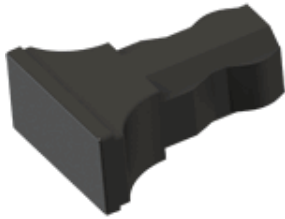
Magnitude:	≥ 500
------------	-------

Tech & Mech Performance	Value
Ambient Temp. (Operation):	-40°C ~ +80°C
Ambient Temp. (Storage):	-40°C ~ +85°C
Insertion Loss (dB):	Typical ≤ 0.2dB Premium ≤ 0.10dB
Repeatability:	≤ 0.10dB
Interchangeability:	≤ 0.20dB
Allowable Engagement Force:	<19.6N
Tensile Strength Of Coupling:	Mechanism: 68.6N

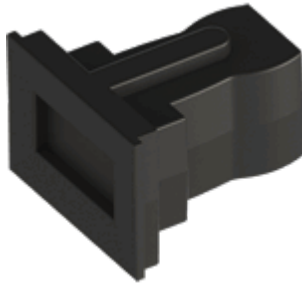
Ordering Information

Product Name	MFR NO	Sales No	Shuttering	Material	Colour	Dust Cap style
SC Duplex Adapter - With Flange	K2.SC2021	0050	Unshuttered	01 ABS 02 PBT 11 PC/ABS	01 Blue (RAL5015) 02 Green (RAL6029) 03 Turquoise 04 Beige (RAL 1013) 16 magenta 11 Purple Color Customization Supported	FS01 Gourd Style FS03 T-shaped Style FS04 Locking Style FS06 Regular Style See image for style↓
						FS01-Gourd Style
						FS03-T-Shaped Style
						FS04-Locking Style
						FS06-Regular Style

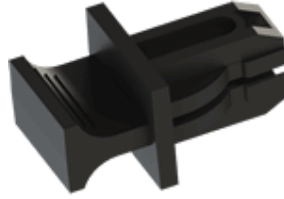
FS01-Gourd Style



FS03-T-Shaped Style



FS04-Locking Style



FS06-Regular Style

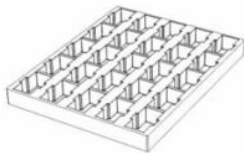


! Dust Cap is standard black and can be customized or matched to the product color.

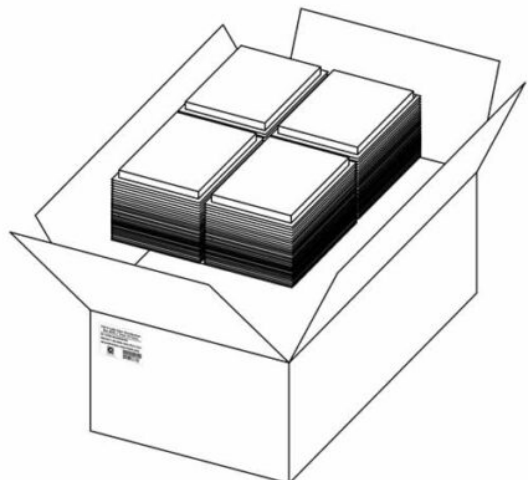
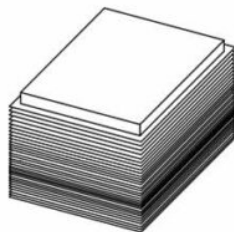
Product Specifications

Detailed packaging and shipping information

Blister Box



Corrugated Carton



Specification	Unit	Value	Remarks
---------------	------	-------	---------

Specification	Unit	Value	Remarks
Unit per Blister box	pcs	30	Transparent Thermoformed Box
Units per Carton	pcs	3000	100 Blister Boxes
Carton Size	cm	46×36×33	Corrugated Carton
Pallet Size	cm	120×80×150	EU Standard
Cartons per Pallet	ctns	36	Max. 6 layers

[Product Specification \(PDF\)](#)

[Product Drawing \(PDF\)](#)

[PRODUCT COMPLIANCE STATEMENT](#)

[CONFLICT MINERALS POLICY](#)

Associated Products



SC Series



SC Series



SC Series



SC Series