

SC Simplex Adapter-Without Flange-(Side Shutter)

 fiberhk.com/product_fhk/sc-simplex-adapter-without-flange-side-shutter/



Sales No. 0032-XXX

MFG No. K2.SC1CF20.0032

Manufacturer: FiberHK

Product Category: SC

Describe:
SC Simplex Adapter-Without Flange-(Side Shutter)

[Applications](#)

Applications

- Optical fiber communication system
 - Optical Security, CATV, FTTx
 - Local, Wide and Global Area Networks
 - High EMI / RFI environments
-

- Racks and Panels / Server Rooms

- Test Equipment

[Features](#)

Features

-
- Low insertion loss
-
- Environmentally stable
-
- Good insertion/extraction life
-
- Easy installation
-
- High reliability

[Standards Compliance](#)

Standards Compliance

-
- ISO/IEC 11801
-
- ANSI/TIA-568 D.3
-
- ISO/IEC 24764/ TIA-942
-
- IEC-60874-14
-
- IEC 61754-4
-
- RoHS, REACH SvHC compliant

Tech & Mech Performance	Value
------------------------------------	--------------

Types:	SC
--------	----

Port Path:	Simplex - 1 Fiber
------------	-------------------

Flange:	Without Flange
---------	----------------

Shell Structure:	Ultrasonic-Welded Assembly
------------------	----------------------------

Housing Material:	Engineering Plastics (ABS PC+ABS PBT)
-------------------	--

Sleeve Material:	ZrO2
------------------	------

Clip Gap:	1.8 mm (Min) to 2.0 mm (Max) (Custom Supp)
-----------	--

Dust Cap Style:	FS01~FS06 (See Image For Style)
-----------------	---------------------------------

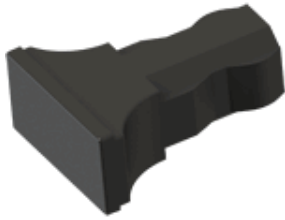
Colour:	Blue Green Turquoise Beige (Custom Supp)
---------	--

Tech & Mech Performance	Value
Magnitude:	≥ 500
Ambient Temp. (Operation):	-40°C ~ +80°C
Ambient Temp. (Storage):	-40°C ~ +85°C
Insertion Loss (dB):	Typical ≤ 0.2dB Premium ≤ 0.10dB
Repeatability:	≤ 0.10dB
Interchangeability:	≤ 0.20dB
Allowable Engagement Force:	<19.6N
Tensile Strength Of Coupling:	Mechanism: 68.6N

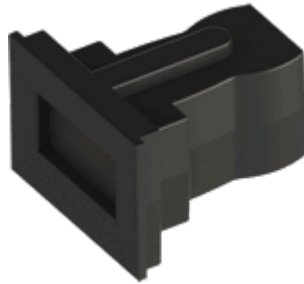
Ordering Information

Product Name	MFR NO	Sales No	Shuttering	Material	Colour	Dust Cap style
SC Duplex Adapter - With Flange	K2.SC2021	0050	Unshuttered	01 ABS 02 PBT 11 PC/ABS	01 Blue (RAL5015)	FS01 Gourd Style
					02 Green (RAL6029)	FS03 T-shaped Style
					03 Turquoise	FS04 Locking Style
					04 Beige (RAL 1013)	FS06 Regular Style
					16 magenta	
					11 Purple	
					Color Customization Supported	See image for style↓
FS01-Gourd Style	FS03-T-Shaped Style	FS04-Locking Style	FS06-Regular Style			

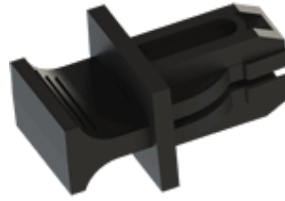
FS01-Gourd Style



FS03-T-Shaped Style



FS04-Locking Style



FS06-Regular Style

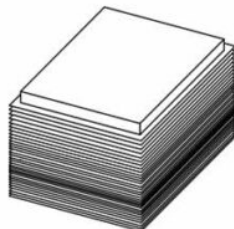
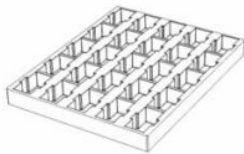


! Dust Cap is standard black and can be customized or matched to the product color.

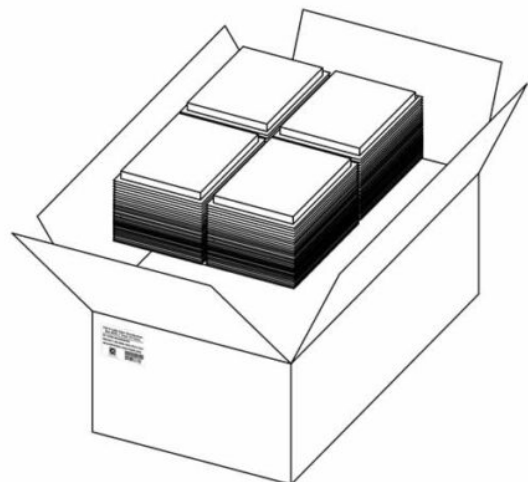
Product Specifications

Detailed packaging and shipping information

Blister Box



Corrugated Carton



Dimensions

46x36x33 cm
(LxWxH)

Net Weight

11.91 Kg
Product Only

Gross Weight

14.42 Kg
With Packaging

Packaging

Inner Packaging: Blister Box
Outer Packaging: Corrugated Carton

Specification	Unit	Value	Remarks
Unit per Blister box	pcs	30	Transparent Thermoformed Box
Units per Carton	pcs	3000	100 Blister Boxes
Carton Size	cm	46×36×33	Corrugated Carton
Pallet Size	cm	120×80×150	EU Standard
Cartons per Pallet	ctns	36	Max. 6 layers

[Product Specification \(PDF\)](#)

[Product Drawing \(PDF\)](#)

[PRODUCT COMPLIANCE STATEMENT](#)

[CONFLICT MINERALS POLICY](#)

Associated Products
