

SC Simplex Adapter-With Flange-(Outward Shutter)

 fiberhk.com/product_fhk/sc-simplex-adapter-with-flange-outward-shutter/



Sales No. 0036-XXX

MFG No. K2.SC.1ZF21

Manufacturer: FiberHK

Product Category: SC

Feature: Outward Shutter

[Applications](#)

Applications

- Optical fiber communication system
- Optical Security, CATV, FTTx
- Local, Wide and Global Area Networks
- High EMI / RFI environments
- Racks and Panels / Server Rooms

-
- Test Equipment

[Features](#)

Features

-
- Low insertion loss
-
- Environmentally stable
-
- Good insertion/extraction life
-
- Easy installation
-
- High reliability

[Standards Compliance](#)

Standards Compliance

-
- ☑ ISO/IEC 11801
-
- ☑ ANSI/TIA-568 D.3
-
- ☑ ISO/IEC 24764/ TIA-942
-
- ☑ IEC-60874-14
-
- ☑ IEC 61754-4
-
- ☑ RoHS, REACH SvHC compliant

Tech & Mech Performance	Value
------------------------------------	--------------

Types:	SC
--------	----

Port Path:	Simplex - 1 Fiber
------------	-------------------

Flange:	With Flange
---------	-------------

Shell Structure:	Ultrasonic-Welded Assembly
------------------	----------------------------

Housing Material:	Engineering Plastics (ABS PC+ABS PBT)
-------------------	--

Sleeve Material:	ZrO2
------------------	------

Clip Gap:	1.8 mm (Min) to 2.0 mm (Max) (Custom Supp)
-----------	--

Dust Cap Style:	FS01~FS06 (See Image For Style)
-----------------	---------------------------------

Colour:	Blue Green Turquoise Beige (Custom Supp)
---------	--

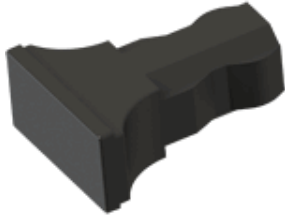
Magnitude:	≥ 500
------------	-------

Tech & Mech Performance	Value
Ambient Temp. (Operation):	-40°C ~ +80°C
Ambient Temp. (Storage):	-40°C ~ +85°C
Insertion Loss (dB):	Typical ≤ 0.2dB Premium ≤ 0.10dB
Repeatability:	≤ 0.10dB
Interchangeability:	≤ 0.20dB
Allowable Engagement Force:	<19.6N
Tensile Strength Of Coupling:	Mechanism: 68.6N

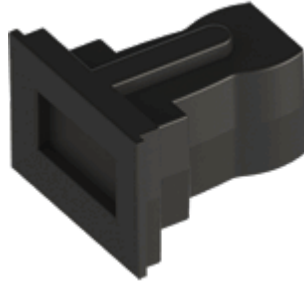
Ordering Information

Product Name	MFR NO	Sales No	Shuttering	Material	Colour	Dust Cap style
SC Simplex Adapter-With Flange-(Outward Shutter)	K2.SC.1ZF21	0036	Outward Shutter	01 ABS 02 PBT 11 PC/ABS	01 Blue (RAL5015) 02 Green (RAL6029) 03 Turquoise 04 Beige (RAL 1013) 16 magenta 11 Purple Color Customization Supported	FS01 Gourd Style FS03 T-shaped Style FS04 Locking Style FS06 Regular Style See image for style↓
						FS01-Gourd Style
						FS03-T-Shaped Style
						FS04-Locking Style
						FS06-Regular Style

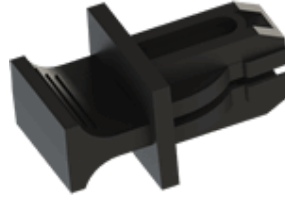
FS01-Gourd Style



FS03-T-Shaped Style



FS04-Locking Style



FS06-Regular Style

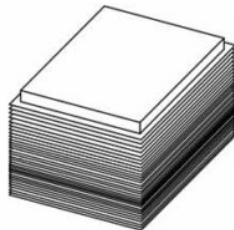
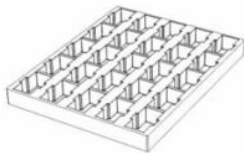


! Dust Cap is standard black and can be customized or matched to the product color.

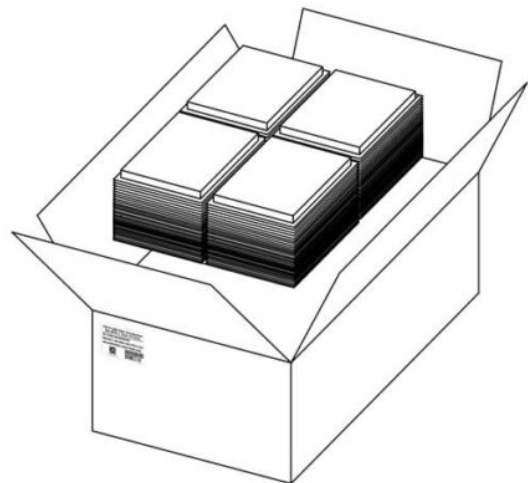
Product Specifications

Detailed packaging and shipping information

Blister Box



Corrugated Carton



Dimensions

46x36x33 cm
(LxWxH)

Net Weight

11.13 Kg
Product Only

Gross Weight

13.69 Kg
With Packaging

Packaging

Inner Packaging: Blister Box
Outer Packaging: Corrugated Carton

Specification	Unit	Value	Remarks
Unit per Blister box	pcs	25	Transparent Thermoformed Box
Units per Carton	pcs	2500	100 Blister Boxes
Carton Size	cm	46×36×33	Corrugated Carton
Pallet Size	cm	120×80×150	EU Standard
Cartons per Pallet	ctns	36	Max. 6 layers

[Product Specification \(PDF\)](#)

[PRODUCT COMPLIANCE STATEMENT](#)

[CONFLICT MINERALS POLICY](#)

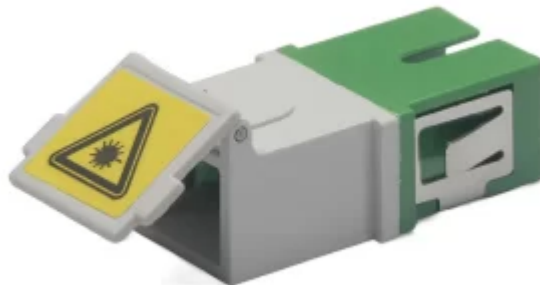
Associated Products



SC Series



LC Series



SC Series