

SC Simplex Adapter-Without Flange-(Integrated)-(Outward Shutter)-(Solder foot clip)

 fiberhk.com/product_fhk/sc-simplex-adapter-without-flange-integrated-outward-shutter-solder-foot-clip/



Sales No. 01352-XXX

MFG No. K2.SC.1ZF10.T3.211

Manufacturer: FiberHK

Product Category: SC

Feature: Integrated-Outward Shutter-Solder foot clip

[Applications](#)

Applications

- Optical fiber communication system
- Optical Security, CATV, FTTx
- Local, Wide and Global Area Networks
- High EMI / RFI environments
- Racks and Panels / Server Rooms
- Test Equipment

[Features](#)

Features

- Low insertion loss
- Environmentally stable
- Good insertion/extraction life
- Easy installation
- High reliability

[Standards Compliance](#)

Standards Compliance

- ISO/IEC 11801
- ANSI/TIA-568 D.3
- ISO/IEC 24764/ TIA-942
- IEC-60874-14
- IEC 61754-4
- RoHS, REACH SvHC compliant

Tech & Mech Performance **Value**

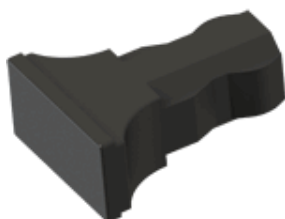
Types:	SC
Port Path:	Duplex - 2 Fiber
Flange:	Without Flange
Shell Structure:	One-Piece Structure
Housing Material:	Engineering Plastics (ABS PC+ABS PBT)
Sleeve Material:	ZrO2
Clip Gap:	1.8 mm (Min) to 2.0 mm (Max) (Custom Supp)
Dust Cap Style:	FS01~FS06 (See Image For Style)
Colour:	Blue Green Turquoise Beige (Custom Supp)
Magnitude:	≥ 500
Ambient Temp. (Operation):	-40°C ~ +80°C
Ambient Temp. (Storage):	-40°C ~ +85°C
Insertion Loss (dB):	Typical ≤ 0.2dB Premium ≤ 0.10dB

Tech & Mech Performance	Value
Repeatability:	≤ 0.10dB
Interchangeability:	≤ 0.20dB
Allowable Engagement Force:	<19.6N
Tensile Strength Of Coupling:	Mechanism: 68.6N

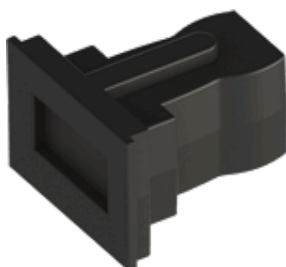
Ordering Information

Product Name	MFR NO	Sales No	Shuttering	Material	Colour	Dust Cap style
SC Simplex Adapter-Without Flange-(Integrated)-(Outward Shutter)-(Solder foot clip)	K2.SC.1ZF10.T3.211	01352	Outward Shutter	01 ABS	01 Blue	FS01 Gourd Style FS03 T-shaped Style FS04 Locking Style FS06 Regular Style
				02 PBT	(RAL5015)	
				11	02 Green	
				PC/ABS	(RAL6029)	
					03 Turquoise	
					04 Beige (RAL 1013)	
					16 magenta	
					11 Purple	
					Color Customization Supported	

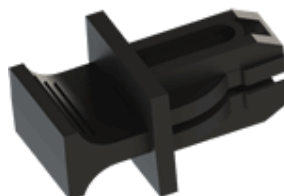
FS01-Gourd Style



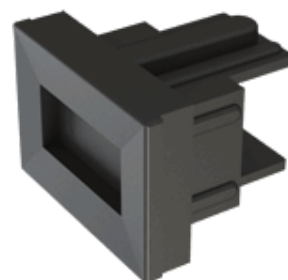
FS03-T-Shaped Style



FS04-Locking Style



FS06-Regular Style



FS01-Gourd Style

FS03-T-Shaped Style

FS04-Locking Style

FS06-Regular Style

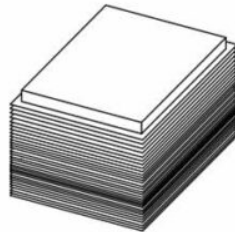
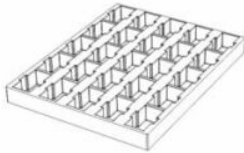


! Dust Cap is standard black and can be customized or matched to the product color.

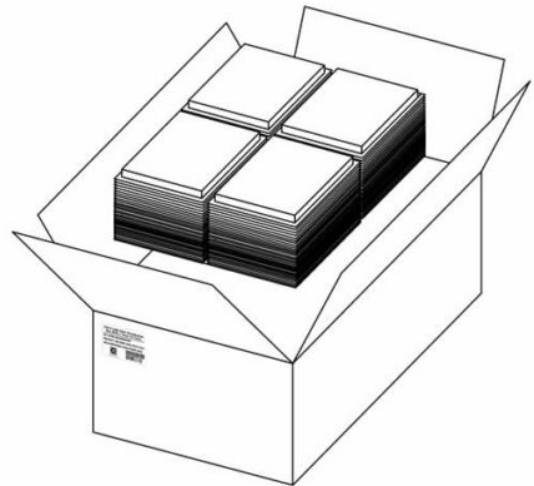
Product Specifications

Detailed packaging and shipping information

Blister Box



Corrugated Carton



Dimensions

46x36x33 cm
(LxWxH)

Net Weight

8.18 Kg
Product Only

Gross Weight

10.74 Kg
With Packaging

Packaging

Inner Packaging: Blister Box
Outer Packaging: Corrugated Carton

Specification	Unit	Value	Remarks
Unit per Blister box	pcs	25	Transparent Thermoformed Box
Units per Carton	pcs	2000	80 Blister Boxes
Carton Size	cm	46×36×33	Corrugated Carton
Pallet Size	cm	120×80×150	EU Standard
Cartons per Pallet	ctns	36	Max. 6 layers

[Product Drawing \(PDF\)](#)

[PRODUCT COMPLIANCE STATEMENT](#)

Associated Products



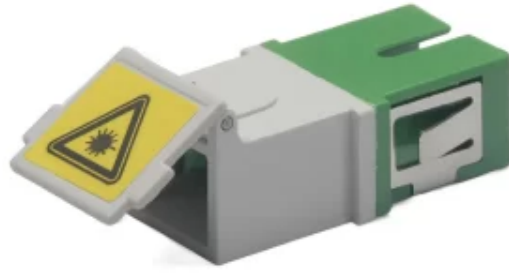
SC Series



SC Series



SC Series



SC Series