

# SC Simplex Adapter-Without Flange-(Integrated)- (Outward Shutter)

 [fiberhk.com/product\\_fhk/sc-simplex-adapter-without-flange-integrated-outward-shutter/](https://fiberhk.com/product_fhk/sc-simplex-adapter-without-flange-integrated-outward-shutter/)



**Sales No.** 00351-XXX

---

**MFG No.** K2.SC.1ZF10

---

**Manufacturer:** FiberHK

---

**Product Category:** SC

---

**Feature:** Integrated

## [Applications](#)

### Applications

- 
- Optical fiber communication system
  - Optical Security, CATV, FTTx
  - Local, Wide and Global Area Networks
  - High EMI / RFI environments
-

- 
- Racks and Panels / Server Rooms
- 

- Test Equipment

### [Features](#)

#### Features

- 
- Low insertion loss
- 
- Environmentally stable
- 
- Good insertion/extraction life
- 
- Easy installation
- 
- High reliability

### [Standards Compliance](#)

#### Standards Compliance

- 
- ISO/IEC 11801
- 
- ANSI/TIA-568 D.3
- 
- ISO/IEC 24764/ TIA-942
- 
- IEC-60874-14
- 
- IEC 61754-4
- 
- RoHS, REACH SvHC compliant

<b>Tech &amp; Mech Performance</b>	<b>Value</b>
------------------------------------	--------------

Types:	SC
--------	----

---

Port Path:	Simplex - 1 Fiber
------------	-------------------

---

Flange:	Without Flange
---------	----------------

---

Shell Structure:	One-Piece Structure
------------------	---------------------

---

Housing Material:	Engineering Plastics (ABS  PC+ABS   PBT)
-------------------	--

---

Sleeve Material:	ZrO2
------------------	------

---

Clip Gap:	1.8 mm (Min) to 2.0 mm (Max) (Custom Supp)
-----------	--

---

Dust Cap Style:	FS01~FS06 (See Image For Style)
-----------------	---------------------------------

---

Colour:	Blue   Green   Turquoise   Beige (Custom Supp)
---------	--

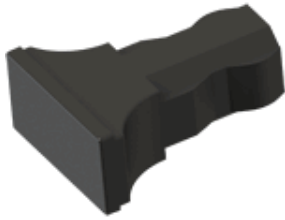
---

Tech & Mech Performance	Value
Magnitude:	≥ 500
Ambient Temp. (Operation):	-40°C ~ +80°C
Ambient Temp. (Storage):	-40°C ~ +85°C
Insertion Loss (dB):	Typical ≤ 0.2dB   Premium ≤ 0.10dB
Repeatability:	≤ 0.10dB
Interchangeability:	≤ 0.20dB
Allowable Engagement Force:	<19.6N
Tensile Strength Of Coupling:	Mechanism: 68.6N

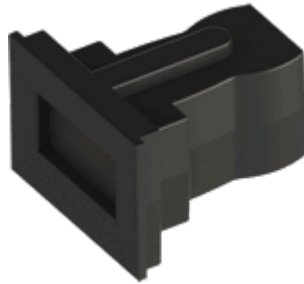
## Ordering Information

Product Name	MFR NO	Sales No	Shuttering	Material	Colour	Dust Cap style
SC Simplex Adapter-Without Flange-(Integrated)-(Outward Shutter)	K2.SC. 1ZF10	00351	Outward Shutter	01 ABS 02 PBT 11 PC/ABS	01 Blue	FS01 Gourd Style FS03 T- shaped Style FS04 Locking Style FS06 Regular Style
					(RAL5015)	
					02 Green	
					(RAL6029)	
					03 Turquoise	
					04 Beige (RAL 1013)	
					16 magenta	
					11 Purple	
					<b>Color Customization Supported</b>	
					<b>See image for style↓</b>	
<b>FS01-Gourd Style</b>	<b>FS03-T-Shaped Style</b>	<b>FS04-Locking Style</b>	<b>FS06-Regular Style</b>			

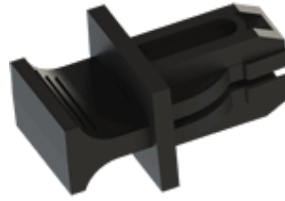
**FS01-Gourd Style**



**FS03-T-Shaped Style**



**FS04-Locking Style**



**FS06-Regular Style**

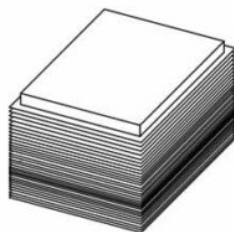
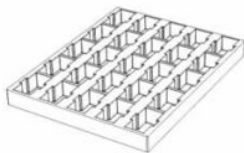


! Dust Cap is standard black and can be customized or matched to the product color.

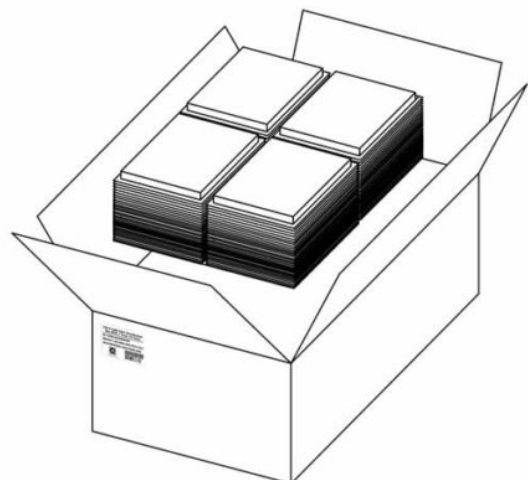
## Product Specifications

Detailed packaging and shipping information

**Blister Box**



**Corrugated Carton**



## Dimensions

---

46x36x33 cm  
(LxWxH)

## Net Weight

---

7.30 Kg  
Product Only

## Gross Weight

---

9.86 Kg  
With Packaging

## Packaging

---

Inner Packaging: Blister Box

Outer Packaging: Corrugated Carton

Specification	Unit	Value	Remarks
Unit per Blister box	pcs	25	Transparent Thermoformed Box
Units per Carton	pcs	2000	80 Blister Boxes
Carton Size	cm	46×36×33	Corrugated Carton
Pallet Size	cm	120×80×150	EU Standard
Cartons per Pallet	ctns	36	Max. 6 layers

[Product Specification \(PDF\)](#)

[Product Drawing \(PDF\)](#)

[PRODUCT COMPLIANCE STATEMENT](#)

[CONFLICT MINERALS POLICY](#)

## Associated Products

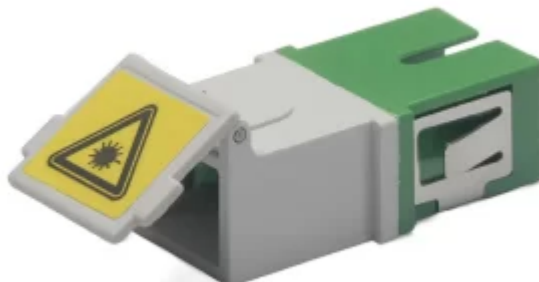
---



SC Series



SC Series



SC Series