

SC Simplex Adapter-Without Flange-(Integrated)

 fiberhk.com/product_fhk/sc-simplex-adapter-without-flange-integrated-2/



Sales No. 1010-XXX

MFG No. K2.SC.1010.0029

Manufacturer: FiberHK

Product Category: SC

Describe: SC Simplex Adapter-Without Flange

[Applications](#)

Applications

-
- Optical fiber communication system
-
- Optical Security, CATV, FTTx
-
- Local, Wide and Global Area Networks
-
- High EMI / RFI environments
-
- Racks and Panels / Server Rooms
-

-
- Test Equipment

[Features](#)

Features

- Low insertion loss
- Environmentally stable
- Good insertion/extraction life
- Easy installation
- High reliability

[Standards Compliance](#)

Standards Compliance

- ISO/IEC 11801
- ANSI/TIA-568 D.3
- ISO/IEC 24764/ TIA-942
- IEC-60874-14
- IEC 61754-4
- RoHS, REACH SvHC compliant

Tech & Mech Performance Value

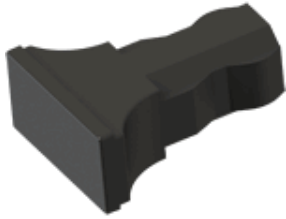
| | |
|-------------------|--|
| Types: | SC |
| Port Path: | Simplex |
| Flange: | Without Flange |
| Shell Structure: | One-Piece Structure |
| Housing Material: | Engineering Plastics (ABS PC+ABS PBT) |
| Sleeve Material: | ZrO2 |
| Clip Gap: | 1.8 mm (Min) to 2.0 mm (Max) (Custom Supp) |
| Dust Cap Style: | FS01~FS06 (See Image For Style) |
| Colour: | Blue Green Turquoise Beige (Custom Supp) |
| Magnitude: | ≥ 500 |

| Tech & Mech Performance | Value |
|-------------------------------|------------------------------------|
| Ambient Temp. (Operation): | -40°C ~ +80°C |
| Ambient Temp. (Storage): | -40°C ~ +85°C |
| Insertion Loss (dB): | Typical ≤ 0.2dB Premium ≤ 0.10dB |
| Repeatability: | ≤ 0.10dB |
| Interchangeability: | ≤ 0.20dB |
| Allowable Engagement Force: | <19.6N |
| Tensile Strength Of Coupling: | Mechanism: 68.6N |

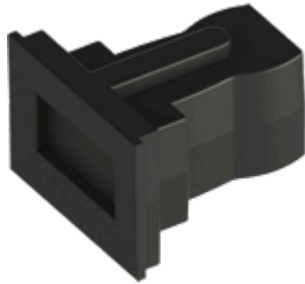
Ordering Information

| Product Name | MFR NO | Sales No | Shuttering | Material | Colour | Dust Cap style |
|---|-----------|----------|-------------|----------------------------------|--|---|
| SC Simplex Adapter - Without Flange | K2.SC1010 | 0029 | Unshuttered | 01 ABS 02 PBT 11 PC/ABS | 01 Blue (RAL5015) | FS01 Gourd Style |
| | | | | | 02 Green (RAL6029) | FS03 T- shaped Style |
| | | | | | 03 Turquoise | FS04 Locking Style |
| | | | | | 04 Beige (RAL 1013) | FS06 Regular Style |
| | | | | | 16 magenta | |
| | | | | | 11 Purple | |
| | | | | | Color Customization Supported | See image for style↓ |

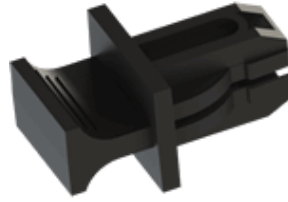
FS01-Gourd Style



FS03-T-Shaped Style



FS04-Locking Style



FS06-Regular Style

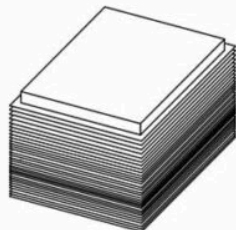
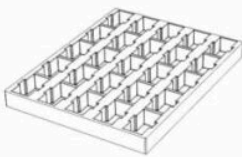


! Dust Cap is standard black and can be customized or matched to the product color.

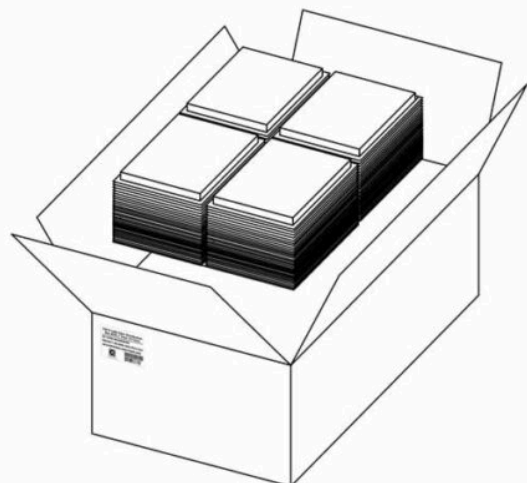
Product Specifications

Detailed packaging and shipping information

Blister Box



Corrugated Carton



Dimensions

46x36x33 cm
(LxWxH)

Net Weight

13.26 Kg
Product Only

Gross Weight

14.45 Kg
With Packaging

Packaging

Inner Packaging: Blister Box

Outer Packaging: Corrugated Carton

| Specification | Unit | Value | Remarks |
|----------------------|------|------------|------------------------------|
| Unit per Blister box | pcs | 25 | Transparent Thermoformed Box |
| Units per Carton | pcs | 3000 | 120 Blister Boxes |
| Carton Size | cm | 46×36×33 | Corrugated Carton |
| Pallet Size | cm | 120×80×150 | EU Standard |
| Cartons per Pallet | ctns | 36 | Max. 6 layers |

[Product Specification \(PDF\)](#)

[Product Drawing \(PDF\)](#)

[PRODUCT COMPLIANCE STATEMENT](#)

[CONFLICT MINERALS POLICY](#)