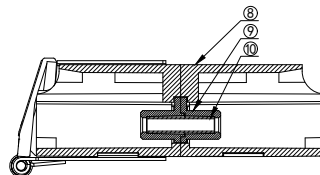
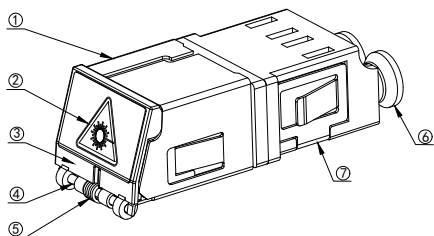
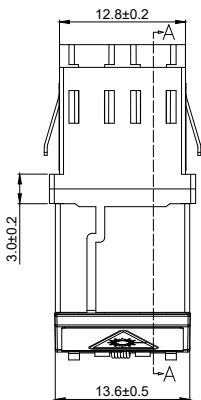
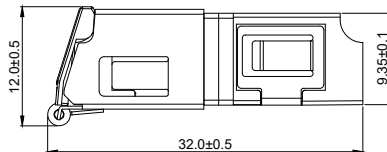
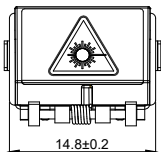


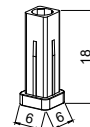
No.	PART NAME	QTY	MATERIAL
1	METAL FRAME	1	SUS304
2	LASER WARNING LABEL	1	COATED PAPER
3	SHUTTER	1	PC/ABS
4	SPRING PIN	1	SUS304
5	TORSION SPRING	1	SUS304
6	CAPS	1	PP
7	CLIP	1	SUS304
8	HOUSING	2	PC/ABS
9	SLEEVE HOLDER	2	PBT
10	SLEEVE	1	ZIRCONIA



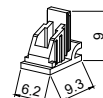
SECTION A-A



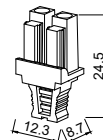
MATERIA: PP  
K3.FL01.0606



MATERIA: TPEE  
K3.FL02.0616



MATERIA: TPE DR TPV  
K3.FL03.0607



MATERIA: TPEE  
K3.FL05.0608

OPTIONAL ATTACHMENT

TECHNICAL REQUIREMENT :

- 1.COMPLIES WITH IEC 61754-20 AND TIA-604-10 STANDARDS
- 2.COMPLIES WITH IEC 61753-1 CATEGORY (C)
- 3.COMPLIES WITH ROHS , REACH REQUIREMENTS

NOTES

1.ALL DIMENSIONS WITHOUT TOLERANCE ARE FOR REFERENCE ONLY.

2.DUST CAPS ARE SHOWN IN ISOMETRIC VIEWS ONLY.

DIMENSION UNITS	SCALE	CURRENT REV DESC:
MM	1:1	
GENERAL TOLERANCES (UNLESS SPECIFIED)		DRWN: JHK CHK'D: CHENEY APPR: JACK 2024/01/12 2024/01/20 2024/11/24  INITIAL REVISION:  DRWN: CHENEY APPR: JACK 2011/01/12 2011/02/24
ANGULAR TOL: ±		
X	± 0.2	
X.X	± 0.1	
X.XX	± 0.05	
X.XXX	± 0.003	
X°	± 2°	
X.X°	± 1°	
DRAFT WHERE APPLICABLE MUST REMAIN WITHIN DIMENSIONS		THIRD ANGLE PROJECTION
		DRAWING A-SIZE
		CUSTOMER 01201



LC DUPLEX ADAPTER-WITHOUT FLANGE-(METAL FRAME SHUTTER)-(WELDING)

PRODUCT DRAWING

DOCUMENT NUMBER	DOC TYPE	DOC PART	REVISION
K2.LC.2JF2YD001.01201	PDF	A001	A/2

MATERIAL NUMBER	CUSTOMER	SHEET NUMBER
SEE TABLE	GENERAL MARKET	1 OF 1