


LC Duplex Adapter-With Flange-(Asymmetric)-(Metal Frame Shutter)

 fiberhk.com/product_fhk/lc-duplex-adapter-with-flange-asymmetric-metal-frame-shutter/



Sales No. 00901-XXX

MFG No. K2.LC.2JF2YF1.11

Manufacturer: FiberHK

Product Category: LC

Main Features: Metal Frame Shutter

[Applications](#)

Applications

- Optical fiber communication system
- Optical Security, CATV, FTTx
- Local, Wide and Global Area Networks
- High EMI / RFI environments
- Racks and Panels / Server Rooms
- Test Equipment

Features

- Low insertion loss
- Environmentally stable
- Good insertion/extraction life
- Easy installation
- High reliability

Standards Compliance

- ISO/IEC 11801
- Cenelec EN 50173-1 / 50173-5
- ANSI/TIA-568 D.3
- IEC 61574-20
- IEC 61753-1 / TIA-604-10
- RoHS, REACH SvHC compliant

Tech & Mech Performance Value

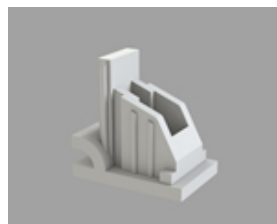
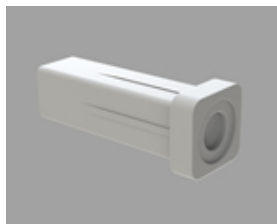
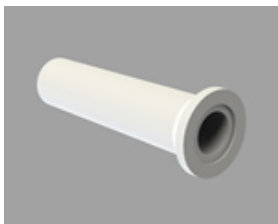
Types:	LC
Port Path:	Duplex
Flange:	With Flange
Shell Structure:	Ultrasonic-Welded Assembly
Housing Material:	Engineering Plastics (PC PC+ABS)
Sleeve Material:	ZrO2
Clip Type	Plastic Clip (Integrated)
Clip Gap:	1.8 mm (Min) to 2.0 mm (Max) (Custom Supp)
Dust Cap Style:	FL01 02 03 (See Image For Style)
Colour:	Blue Green Turquoise Beige (Custom Supp)

Tech & Mech Performance	Value
Mating Durability:	≥ 500
Ambient Temp (operation):	-40°C ~ +80°C
Ambient Temp. (storage):	-40°C ~ +85°C
Insertion Loss (dB):	Typical ≤ 0.2dB Premium ≤ 0.10dB
Impact:	1.5M Drop Height
Sleeve Pull Force:	1~3N

Ordering Information

Product Name	MFR NO	Sales No	Shuttering	Material	Colour	Dust Cap style
LC Duplex Adapter-With Flange-(Asymmetric)-(Metal Frame Shutter)	K2.LC.2JF2YF1.11	00901	Metal Frame Shutter	01 PC 11 PC/ABS	01 Blue (RAL5015)	FL01 Cylindrical Shape
					02 Green (RAL6029)	FL02 Square Column
					03 Turquoise	FL03 Bevel Connection
					04 Beige (RAL 1013)	
					16 magenta	See image for style↓
					11 Purple	
					Color Customization Supported	

FL01-Cylindrical Shape FL02-Square Column FL03-Bevel Connection

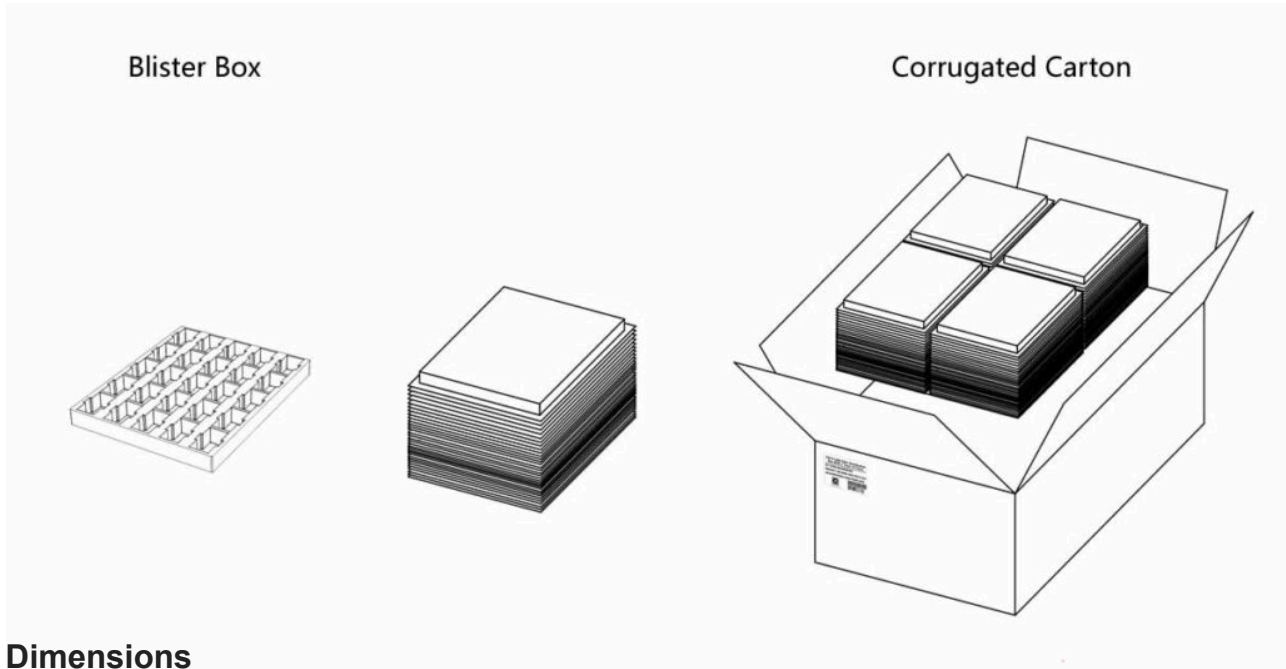


FL01-Cylindrical Shape FL02-Square Column FL03-Bevel Connection

The usual color is white and supports custom colors

Product Specifications

Detailed packaging and shipping information



Dimensions

46x36x33 cm
(LxWxH)

Net Weight

12.03 Kg
Product Only

Gross Weight

14.60 Kg
With Packaging

Packaging

Inner Packaging: Blister Box

Outer Packaging: Corrugated Carton

Specification	Unit	Value	Remarks
Unit per Blister box	pcs	25	Transparent Thermoformed Box
Units per Carton	pcs	3000	120 Blister Boxes
Carton Size	cm	46×36×33	Corrugated Carton
Pallet Size	cm	120×80×150	EU Standard
Cartons per Pallet	ctns	36	Max. 6 layers

[Product Specification \(PDF\)](#)

[Product Drawing \(PDF\)](#)

[PRODUCT COMPLIANCE STATEMENT](#)

[CONFLICT MINERALS POLICY](#)

Associated Products

SC Series



SC Series



LC Series