

SC Simplex Adapter-With Flange-(Stable Clip)

 fiberhk.com/product_fhk/sc-simplex-adapter-with-flange-stable-clip/



Sales No. 0010.T3.221-XXX

MFG No. K2.SC1021

Manufacturer: FiberHK

Product Category: SC

Feature: Stable Clip

[Applications](#)

Applications

- Optical fiber communication system
 - Optical Security, CATV, FTTx
 - Local, Wide and Global Area Networks
 - High EMI / RFI environments
 - Racks and Panels / Server Rooms
-

-
- Test Equipment

[Features](#)

Features

- Low insertion loss
- Environmentally stable
- Good insertion/extraction life
- Easy installation
- High reliability

[Standards Compliance](#)

Standards Compliance

- ISO/IEC 11801
- ANSI/TIA-568 D.3
- ISO/IEC 24764/ TIA-942
- IEC-60874-14
- IEC 61754-4
- RoHS, REACH SvHC compliant

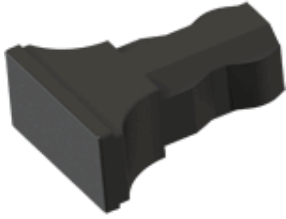
Tech & Mech Performance	Value
Types:	SC
Port Path:	Simplex - 1 Fiber
Flange:	With Flange
Shell Structure:	Ultrasonic-Welded Assembly
Housing Material:	Engineering Plastics (ABS PC+ABS PBT)
Sleeve Material:	ZrO2
Clip Gap:	1.8 mm (Min) to 2.0 mm (Max) (Stable Clip)
Dust Cap Style:	FS01~FS06 (See Image For Style)
Colour:	Blue Green Turquoise Beige (Custom Supp)
Magnitude:	≥ 500

Tech & Mech Performance	Value
Ambient Temp. (Operation):	-40°C ~ +80°C
Ambient Temp. (Storage):	-40°C ~ +85°C
Insertion Loss (dB):	Typical ≤ 0.2dB Premium ≤ 0.10dB
Repeatability:	≤ 0.10dB
Interchangeability:	≤ 0.20dB
Allowable Engagement Force:	<19.6N
Tensile Strength Of Coupling:	Mechanism: 68.6N

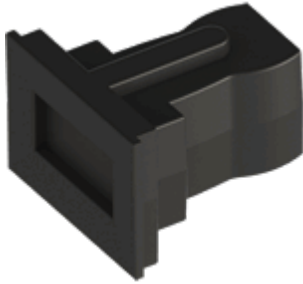
Ordering Information

Product Name	MFR NO	Sales No	Shuttering	Material	Colour	Dust Cap style
SC Simplex Adapter -With Flange-(Stable Clip)	K2.SC.1021	0010.T3.221	Unshuttered	01 ABS	01 Blue (RAL5015)	FS01
				02 PBT		Gourd Style
				11 PC/ABS	02 Green (RAL6029)	FS03
					03 Turquoise	T-shaped Style
					04 Beige (RAL 1013)	FS04 Locking Style
					16 magenta	FS06
					11 Purple	Regular Style
			Color Customization Supported	See image for style↓		

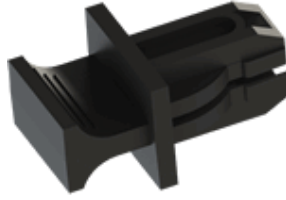
FS01-Gourd Style



FS03-T-Shaped Style



FS04-Locking Style



FS06-Regular Style

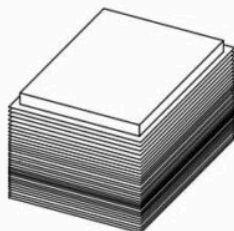
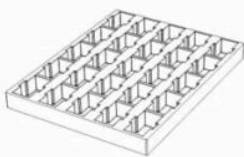


! Dust Cap is standard black and can be customized or matched to the product color.

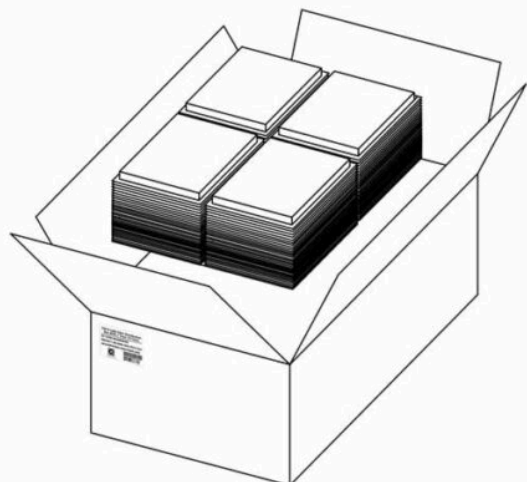
Product Specifications

Detailed packaging and shipping information

Blister Box



Corrugated Carton



Dimensions

46x36x33 cm
(LxWxH)

Net Weight

14.25 Kg
Product Only

Gross Weight

16.81 Kg
With Packaging

Packaging

Inner Packaging: Blister Box
Outer Packaging: Corrugated Carton

Specification	Unit	Value	Remarks
Unit per Blister box	pcs	25	Transparent Thermoformed Box
Units per Carton	pcs	2500	100 Blister Boxes
Carton Size	cm	46×36×33	Corrugated Carton
Pallet Size	cm	120×80×150	EU Standard
Cartons per Pallet	ctns	36	Max. 6 layers

[Product Specification \(PDF\)](#)

[Product Drawing \(PDF\)](#)

[PRODUCT COMPLIANCE STATEMENT](#)

[CONFLICT MINERALS POLICY](#)