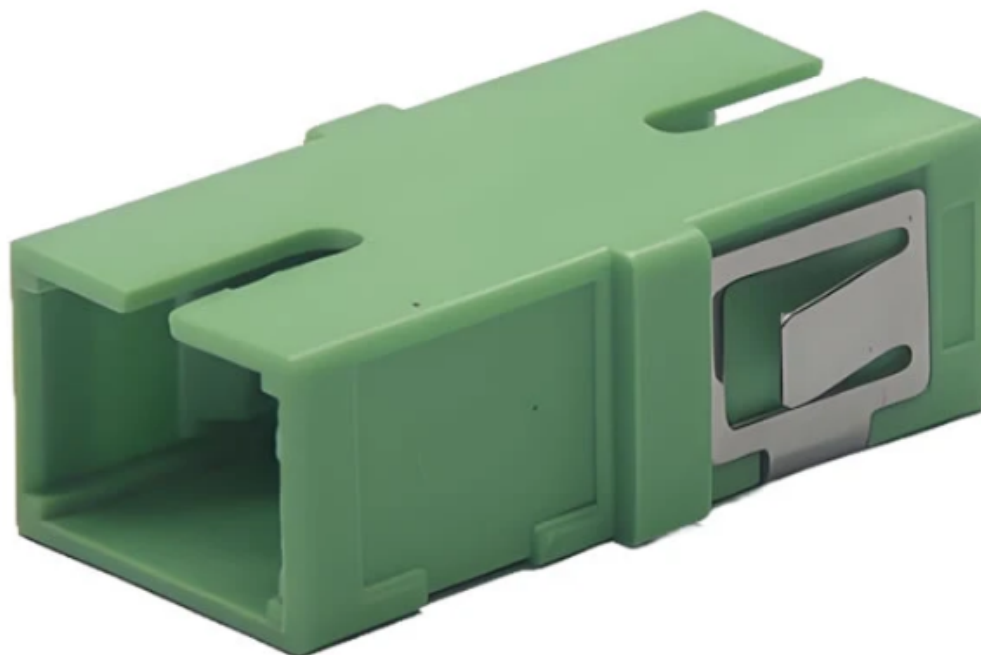


SC Simplex Adapter-Without Flange-(Integrated)- (Double Clip Seat)

 fiberhk.com/product_fhk/sc-simplex-adapter-without-flange-integrated-double-clip-seat/



Sales No. 0027-XXX

MFG No. K2.SC1010.0027

Manufacturer: FiberHK

Product Category: SC

Feature: Integrated, Double Clip Seat

[Applications](#)

Applications

-
- Optical fiber communication system
-
- Optical Security, CATV, FTTx
-
- Local, Wide and Global Area Networks
-
- High EMI / RFI environments
-

-
- Racks and Panels / Server Rooms
-

- Test Equipment

[Features](#)

Features

-
- Low insertion loss
-
- Environmentally stable
-
- Good insertion/extraction life
-
- Easy installation
-
- High reliability

[Standards Compliance](#)

Standards Compliance

-
- ISO/IEC 11801
-
- ANSI/TIA-568 D.3
-
- ISO/IEC 24764/ TIA-942
-
- IEC-60874-14
-
- IEC 61754-4
-
- RoHS, REACH SvHC compliant

Tech & Mech Performance

Value

Types:

SC

Port Path:

Simplex

Flange:

Without Flange

Shell Structure:

One-Piece Structure

Housing Material:

Engineering Plastics (ABS| PC+ABS | PBT)

Sleeve Material:

ZrO2

Clip Gap:

1.8 mm (Min) to 2.0 mm (Max) (Custom Supp)

Dust Cap Style:

FS01~FS06 (See Image For Style)

Colour:

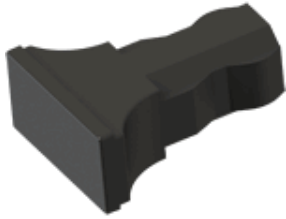
Blue | Green | Turquoise | Beige (Custom Supp)

Tech & Mech Performance	Value
Magnitude:	≥ 500
Ambient Temp. (Operation):	-40°C ~ +80°C
Ambient Temp. (Storage):	-40°C ~ +85°C
Insertion Loss (dB):	Typical ≤ 0.2dB Premium ≤ 0.10dB
Repeatability:	≤ 0.10dB
Interchangeability:	≤ 0.20dB
Allowable Engagement Force:	<19.6N
Tensile Strength Of Coupling:	Mechanism: 68.6N

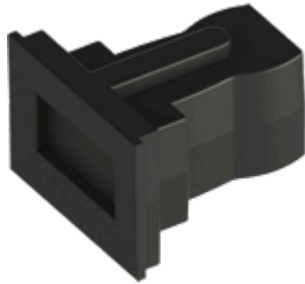
Ordering Information

Product Name	MFR NO	Sales No	Shuttering	Material	Colour	Dust Cap style
SC Simplex Adapter-Without Flange-(Integrated)-(Double Clip Seat)	K2.SC.1010	0027	Unshuttered	01 ABS	01 Blue (RAL5015)	FS01
				02 PBT		Gourd
				11	02 Green (RAL6029)	Style
				PC/ABS		FS03
					03 Turquoise	T-shaped
					04 Beige (RAL 1013)	Style
					16 magenta	FS04
	11 Purple	Locking				
				16 magenta	FS06	Regular
				11 Purple		Style
					Color Customization Supported	See image for style↓

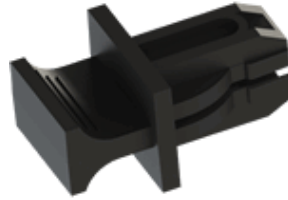
FS01-Gourd Style



FS03-T-Shaped Style



FS04-Locking Style



FS06-Regular Style

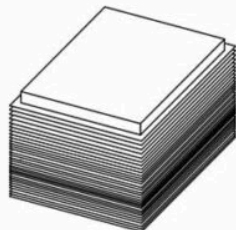
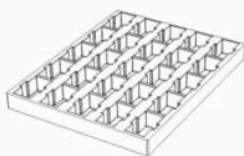


! Dust Cap is standard black and can be customized or matched to the product color.

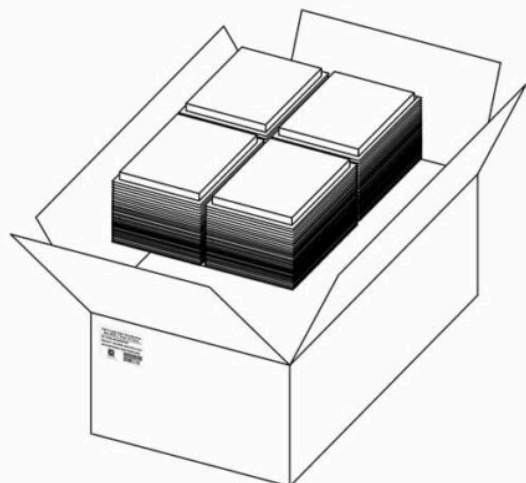
Product Specifications

Detailed packaging and shipping information

Blister Box



Corrugated Carton



Dimensions

46x36x33 cm
(LxWxH)

Net Weight

11.79 Kg
Product Only

Gross Weight

12.98 Kg
With Packaging

Packaging

Inner Packaging: Blister Box

Outer Packaging: Corrugated Carton

Specification	Unit	Value	Remarks
Unit per Blister box	pcs	25	Transparent Thermoformed Box
Units per Carton	pcs	3000	120 Blister Boxes
Carton Size	cm	46×36×33	Corrugated Carton
Pallet Size	cm	120×80×150	EU Standard
Cartons per Pallet	ctns	36	Max. 6 layers

[Product Specification \(PDF\)](#)

Associated Products



SC Series



SC Series



SC Series