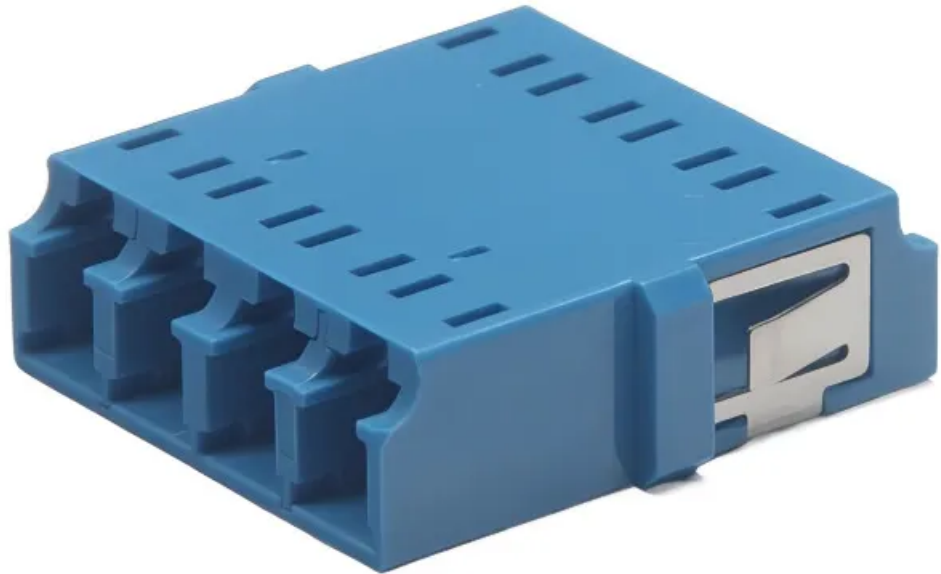


LC Duplex Adapter-Without Flange-(Symmetric)-(Integrated)

 fiberhk.com/product_fhk/lc-duplex-adapter-without-flange-symmetric-integrated/



Sales No.	5100-AAA
MFG No.	K2.LC.401YD001
Manufacturer:	FiberHK
Product Category:	LC
Main Features:	Symmetric-Integrated

Applications

- Optical fiber communication system
- Optical Security, CATV, FTTx
- Local, Wide and Global Area Networks
- High EMI / RFI environments
- Racks and Panels / Server Rooms
- Test Equipment

Features

- Low insertion loss
- Environmentally stable
- Good insertion/extraction life
- Easy installation
- High reliability

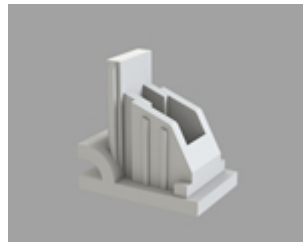
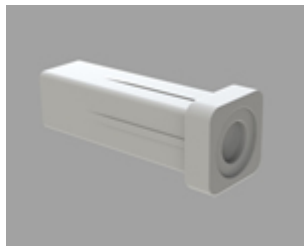
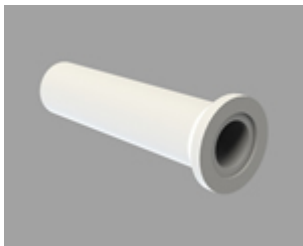
Standards Compliance

- ISO/IEC 11801
- Cenelec EN 50173-1 / 50173-5
- ANSI/TIA-568 D.3
- IEC 61574-20
- IEC 61753-1 / TIA-604-10
- RoHS, REACH SvHC compliant

Tech & Mech Performance	Value
Types:	LC
Port Path:	Quad
Flange:	Without Flange
Shell Structure:	Integrated
Housing Material:	Engineering Plastics (PC PC+ABS)
Sleeve Material:	ZrO2
Clip Type	Metal Clip
Clip Gap:	1.8 mm (Min) to 2.0 mm (Max) (Custom Supp)
Dust Cap Style:	FL01 02 03 (See Image For Style)
Colour:	Blue Green Turquoise Beige (Custom Supp)
Mating Durability:	≥ 500
Ambient Temp (operation):	-40°C ~ +80°C
Ambient Temp. (storage):	-40°C ~ +85°C
Insertion Loss (dB):	Typical ≤ 0.2dB Premium ≤ 0.10dB
Impact:	1.5M Drop Height
Sleeve Pull Force:	1~3N

Ordering Information

Product Name	MFR NO	Sales No	Shuttering	Material	Colour	Dust Cap style
LC Duplex Adapter - With Flange	K2.SC2021	0050	Unshuttered	01 PC 11 PC/ABS	01 Blue (RAL5015)	FL01 Cylindrical Shape FL02 Square Column FL03 Bevel Connection See image for style ↓
					02 Green (RAL6029)	
					03 Turquoise	
					04 Beige (RAL 1013)	
					16 magenta	
					11 Purple	
					Color Customization Supported	

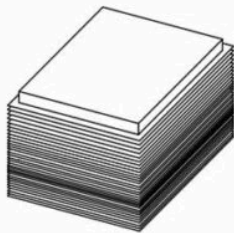
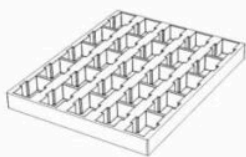


The usual color is white and supports custom colors

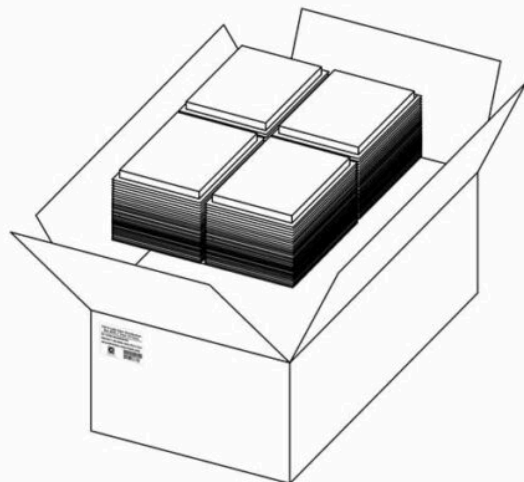
Product Specifications

Detailed packaging and shipping information

Blister Box



Corrugated Carton



Dimensions

54x38x33 cm
(LxWxH)

Net Weight

12.38 Kg
Product Only

Gross Weight

13.85 Kg
With Packaging

Packaging

Inner Packaging: Blister Box

Outer Packaging: Corrugated Carton

Specification	Unit	Value	Remarks
Unit per Blister box	pcs	20	Transparent Thermoformed Box
Units per Carton	pcs	2500	125 Blister Boxes
Carton Size	cm	54×38×33	Corrugated Carton
Pallet Size	cm	120×80×15	EU Standard
Cartons per Pallet	ctns	24	Max. 6 layers

[Product Specification \(PDF\)](#)

[Product Drawing \(PDF\)](#)

[PRODUCT COMPLIANCE STATEMENT](#)

[CONFLICT MINERALS POLICY](#)

Associated Products



LC Series



LC Series