


LC Quad Adapter-With Flange-(Symmetrical)

 fiberhk.com/product_fhk/lc-quad-adapter-with-flange-symmetrical/



Sales No.	01600-XXX
MFG No.	K2.LC.402YD102
Manufacturer:	FiberHK
Product Category:	LC
Main Features:	Symmetrical

Applications

- Optical fiber communication system
- Optical Security, CATV, FTTx
- Local, Wide and Global Area Networks
- High EMI / RFI environments
- Racks and Panels / Server Rooms
- Test Equipment

Features

- Low insertion loss
- Environmentally stable
- Good insertion/extraction life
- Easy installation
- High reliability

Standards Compliance

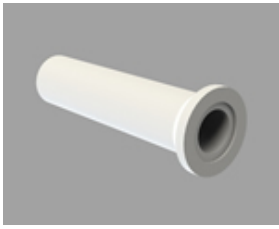
- ISO/IEC 11801
- Cenelec EN 50173-1 / 50173-5
- ANSI/TIA-568 D.3
- IEC 61574-20
- IEC 61753-1 / TIA-604-10
- RoHS, REACH SvHC compliant

Tech & Mech Performance	Value
Types:	LC
Port Path:	Quad
Flange:	With Flange
Shell Structure:	Ultrasonic-Welded Assembly
Housing Material:	Engineering Plastics (PC PC+ABS)
Sleeve Material:	ZrO2
Clip Type	Metal Clip
Clip Gap:	1.8 mm (Min) to 2.0 mm (Max) (Custom Supp)
Dust Cap Style:	FL01 02 03 05 (See Image For Style)
Colour:	Blue Green Turquoise Beige (Custom Supp)
Mating Durability:	≥ 500
Ambient Temp (operation):	-40°C ~ +80°C
Ambient Temp. (storage):	-40°C ~ +85°C
Insertion Loss (dB):	Typical ≤ 0.2dB Premium ≤ 0.10dB
Impact:	1.5M Drop Height
Sleeve Pull Force:	1~3N

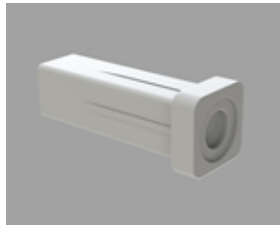
Ordering Information

Product Name	MFR NO	Sales No	Shuttering	Material	Colour	Dust Cap style
LC Quad Adapter-With Flange-(Symmetrical)	K2.LC.402YD102	01600	Unshuttered	01 PC 11 PC/ABS	01 Blue (RAL5015)	FL01 Cylindrical Shape FL02 Square Column FL03 Bevel Connection FL05 Handle Duplex
					02 Green (RAL6029)	
					03 Turquoise	
					04 Beige (RAL 1013)	
					16 magenta	
					11 Purple	See image for style↓
					Color Customization Supported	

FL01-Cylindrical Shape



FL02-Square Column



FL03-Bevel Connection



FL05-Handle Duplex

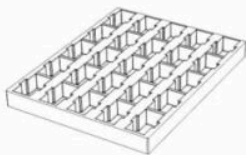


The usual color is white and supports custom colors

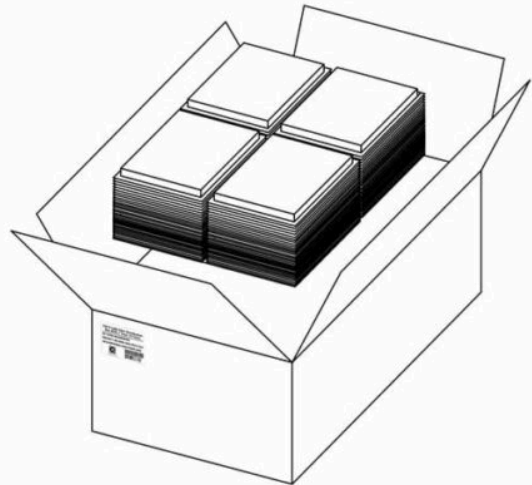
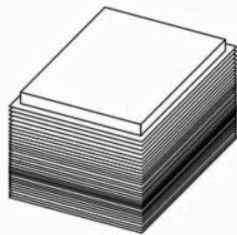
Product Specifications

Detailed packaging and shipping information

Blister Box



Corrugated Carton



Dimensions

54x38x33 cm
(LxWxH)

Net Weight

14.45 Kg
Product Only

Gross Weight

15.92 Kg
With Packaging

Packaging

Inner Packaging: Blister Box

Outer Packaging: Corrugated Carton

Specification	Unit	Value	Remarks
Unit per Blister box	pcs	20	Transparent Thermoformed Box
Units per Carton	pcs	2500	125 Blister Boxes
Carton Size	cm	54×38×33	Corrugated Carton
Pallet Size	cm	120×80×15	EU Standard
Cartons per Pallet	ctns	24	Max. 6 layers

[Product Specification \(PDF\)](#)

[Product Drawing \(PDF\)](#)

[PRODUCT COMPLIANCE STATEMENT](#)

[CONFLICT MINERALS POLICY](#)

Associated Products



LC Series